



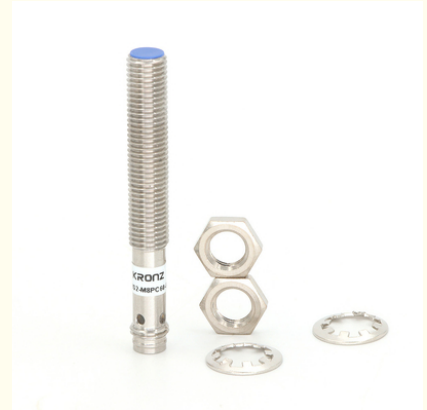
## Stainless Steel Housing Inductive Proximity Sensor 60mm Length NPN NO Output

Our Product Introduction

for more products please visit us on [connector-industrial.com](http://connector-industrial.com)

### Basic Information

- Place of Origin: Guangdong, China
- Brand Name: KRONZ
- Certification: CE
- Model Number: IS2-M8NO60-S0B/D
- Minimum Order Quantity: 10 pieces
- Price: Negotiable
- Packaging Details: Polybag packing
- Delivery Time: 5-8 working days
- Payment Terms: T/T, Western Union, MoneyGram
- Supply Ability: 100000 pieces per month



### Product Specification

- Installation Type: Quasi-flush
- Output: NPN NO
- Connection Type: M8 Connector
- Switching Frequency: 3kHz
- Response Time: 0.1ms
- Switch Hysteresis: <15%sr
- Repeatability: <1.0%sr
- Material: Stainless Steel
- LED Display: Available
- Highlight: **Stainless Steel Housing Inductive Proximity Sensor**  
**, 60mm Length Inductive Proximity Sensor,**  
**NPN NO Inductive Proximity Sensor**



## Product Description

### Inductive Sensors 60mm Length Stainless Steel NPN NO Quasi-flush Install Type

#### Product Description

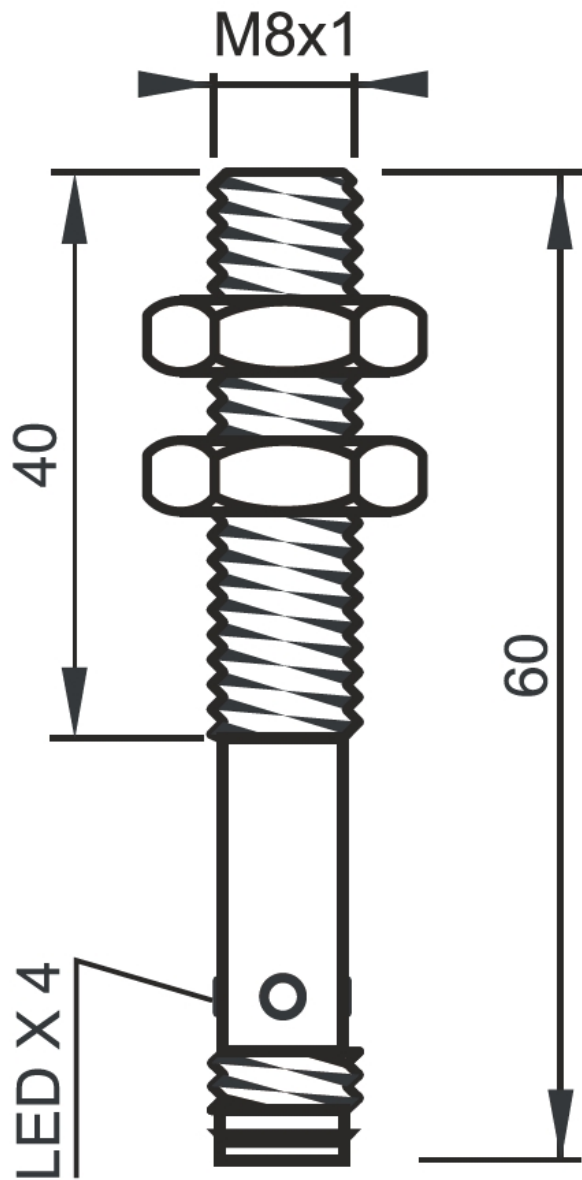
Inductive sensors contribute significantly to quality control. They can precisely detect the presence and alignment of metal parts during production, reducing errors and improving product quality. Inductive sensors are also indispensable in industrial automation. They enable proximity detection in machinery, preventing accidents and minimizing damage. For example, in conveyor systems, they ensure that objects are properly positioned and avoid jams.

- Installation type: Quasi-flush
- Sensing range Sn: 2mm
- Output function: NPN,NO
- Supply voltage: 10-30VDC
- Connection type: M8 connector
- Housing material: Stainless steel

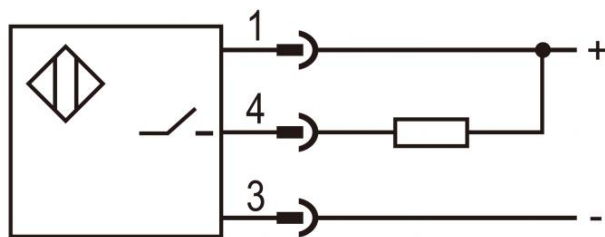
#### Technical Data

Installation Type	Quasi-flush
Detection Distance	2mm
LED Display	Yes
Working Voltage	10-30VDC
No Load Current	<10mA (24V)
Max. load current	100mA
Voltage drop	<2.0v
Switching frequency	3kHz
Tolerance(Sr)	10%
Leakage current	0.01mA
Response time	0.1ms
Temperature drift	10%sr
Switch hysteresis	<15%sr
Repeatability	<1.0%sr
Short-circuit protection/Reverse polarity protection	Yes
Overload current protection	220mA
Protection grade	IP67
Ambient temperature	-25 to +70
Sensing surface material	POM
Connection type	M8 connector

#### Dimensional Drawing



Wiring Diagram



**KRONZ** Kronz (guangzhou) Electronics Co., Ltd.



+8618924160375



sales02@kronz.cn



connector-industrial.com

6th Floor, B602 Building, No.10, Rong Jing 2nd Road, Yu Shan Guo Ji, Yong Ning Street, Zeng Cheng District, Guangzhou, P.R.China