



TOF Sensors 50-4000mm Red LED PNP Output Reflective Type Detect

Our Product Introduction

for more products please visit us on connector-industrial.com

Basic Information

- Place of Origin: Guangdong, China
- Brand Name: KRONZ
- Certification: CE
- Model Number: BTFM-4P (50-1500mm)
- Minimum Order Quantity: 10 pieces
- Price: Negotiable
- Packaging Details: Polybag packing
- Delivery Time: 5-8 working days
- Payment Terms: T/T, Western Union, MoneyGram
- Supply Ability: 100000 pieces per month

KRONZ



Product Specification

- Product Name: TOF Sensors
- Detection Method: Reflective Type
- Detection Distance: 50~1500 Mm
- Output: PNP
- Light Source: Red LED (940nm) IEC CLASS1
- Supply Voltage: DC12~24V
- Highlight: 50mm TOF Sensors, PNP Output TOF Sensors, Reflective Type TOF Sensors

KRONZ



Product Description

TOF Sensors 50-4000mm Red LED PNP Output Reflective Type Detect

Product Specifications

Attribute	Value
Product Name	TOF Sensors
Detection Method	Reflective type
Detection Distance	50~1500 mm
Output	PNP
Light Source	Red LED (940nm) IEC CLASS1
Supply Voltage	DC12~24V

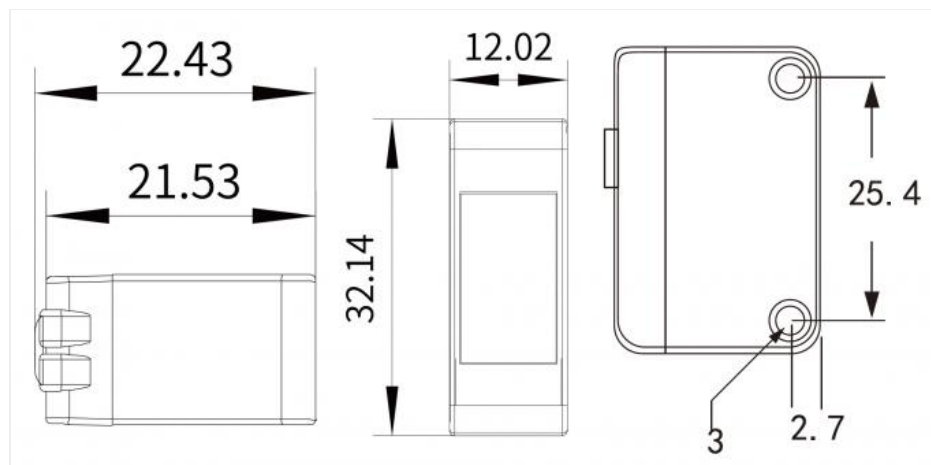
Product Overview

TOF (Time of Flight) is an advanced detection technology that calculates distance based on the time difference between light transmission and reception. Unlike traditional photoelectric sensors, TOF technology is unaffected by the color or material of detected objects, ensuring more stable and reliable performance.

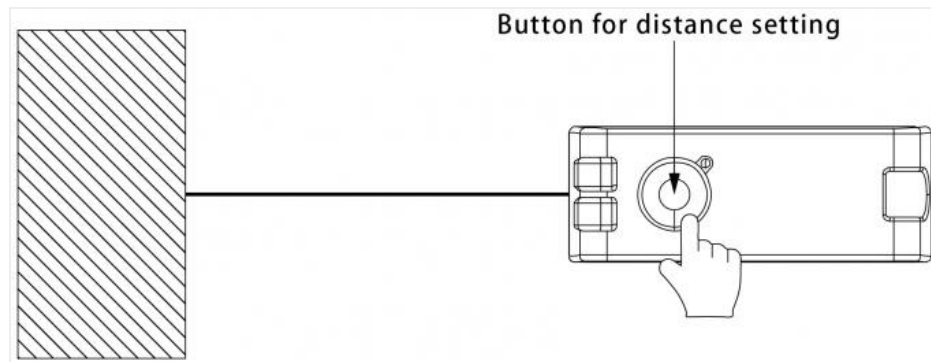
Technical Specifications

Detection method	Reflective type
Output	PNP output
Action mode	Set the TOF principle with one click
Detection distance	50~4000 mm
Light source	Red LED (940nm) IEC CLASS1
Supply voltage	DC12~24V $\pm 10\%$
Power consumption	Less than 480mW (DC24V, current less than 20mA)
Control output	Load power supply voltage DC26.4V or less, load 80mA or less current collector open circuit output
Output residual voltage	Below 1V (load current less than 10mA) Below 2V (load current 10~80mA)
Protection circuit	Power supply reverse connection protection/load short circuit protection/output reverse connection protection
Response time	Action and return: less than 100ms each
Ambient temperature	Operation: -20~+50°C Storage: -40~+70°C (no freezing or condensation)
Ambient humidity	Operation: 35~85%RH Storage: 35~95%RH (no freezing or condensation)
Ambient illumination	Sunlight: below 10,000lx
Protective structure	IEC60529 IP65

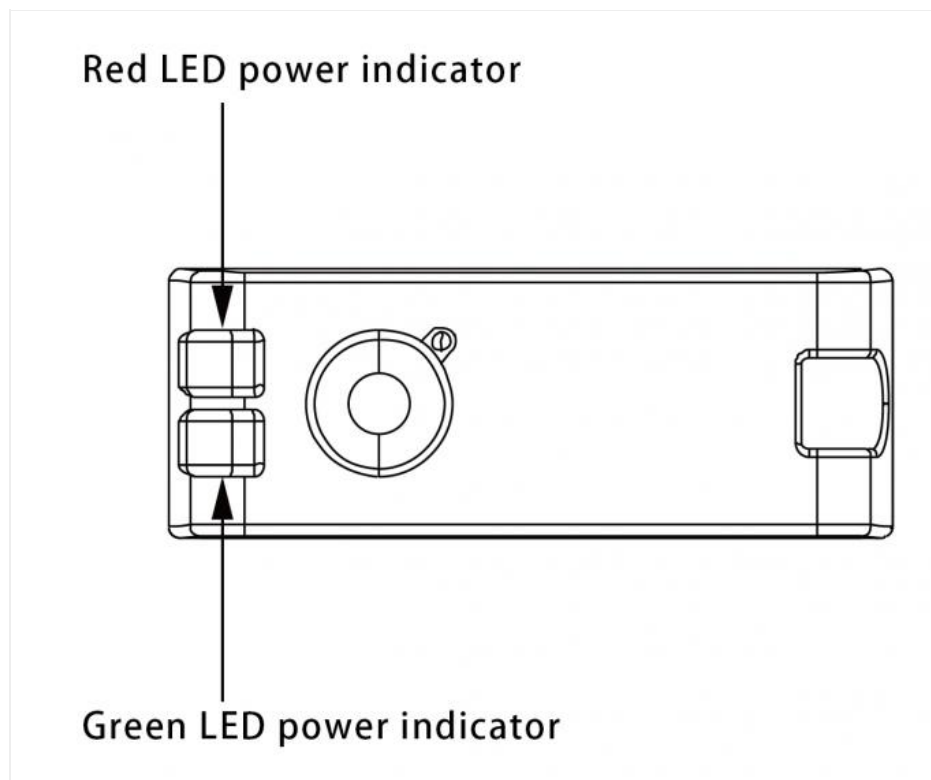
Installation & Operation

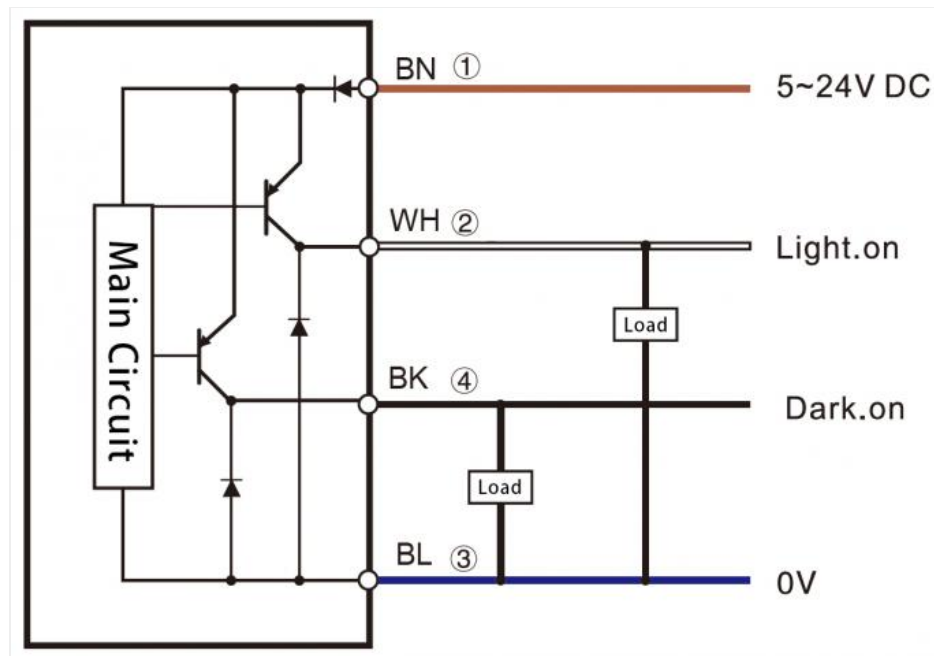


(1) Place the detected object at the desired position and press the teach pendant



(2) Press the teaching button for more than 3 seconds until the traffic light flashes alternately. Release the button to complete teaching.





DC line 4-wire PNP output

KRONZ Kronz (guangzhou) Electronics Co., Ltd.



+8618924160375



sales02@kronz.cn



connector-industrial.com

6th Floor, B602 Building, No.10, Rong Jing 2nd Road, Yu Shan Guo Ji, Yong Ning Street, Zeng Cheng District, Guangzhou, P.R.China