



## TOF Sensors 50-4000mm Red LED NPN Reflective Type Detect Time of Flight Sensor

Our Product Introduction

for more products please visit us on [connector-industrial.com](http://connector-industrial.com)

### Basic Information

- Place of Origin: Guangdong, China
- Brand Name: KRONZ
- Certification: CE
- Model Number: BTFM-4N (50-1500mm)
- Minimum Order Quantity: 10 pieces
- Price: Negotiable
- Packaging Details: Polybag packing
- Delivery Time: 5-8 working days
- Payment Terms: T/T, Western Union, MoneyGram
- Supply Ability: 100000 pieces per month

KRONZ



### Product Specification

- Product Name: Time Of Flight Sensors
- Detection Method: Reflective Type
- Detection Distance: 50~4000 Mm
- Output: NPN
- Ambient Illumination: Sunlight: Below 10.000lx
- Protective Structure: IEC60529 IP65
- Highlight: 4000mm TOF Sensors, Red LED TOF Sensors, NPN Reflective Type TOF Sensors

KRONZ



## Product Description

### TOF Sensors 50-4000mm Red LED NPN Reflective Type Detect Time of Flight Sensor

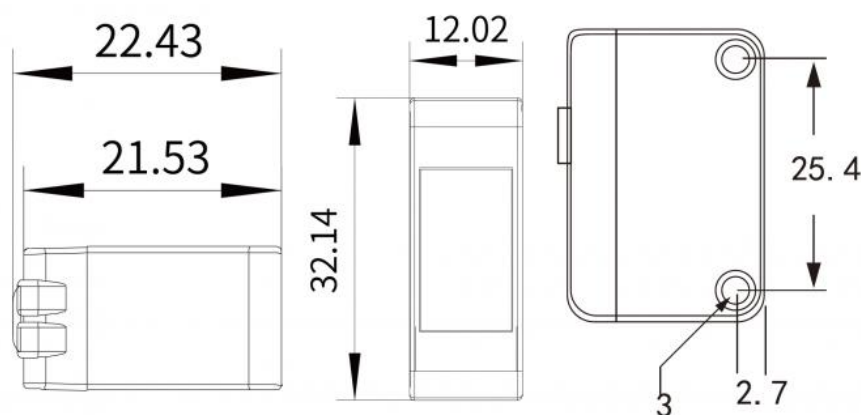
#### Product Description

TOF (Time of flight) is a new time-of-flight detection principle. In the past, most photoelectric sensors used the photoelectric effect. However, with the mature application of TOF technology in mobile phone face recognition, AGV, drones and other industries, the technology has gradually been decentralized to basic sensors field. The principle of time-of-flight detection is to calculate the distance based on the time difference between the transmitting end and the receiving end of the light source. Therefore, it is not affected by the color and material of the object being measured, and the product detection is more stable and reliable.

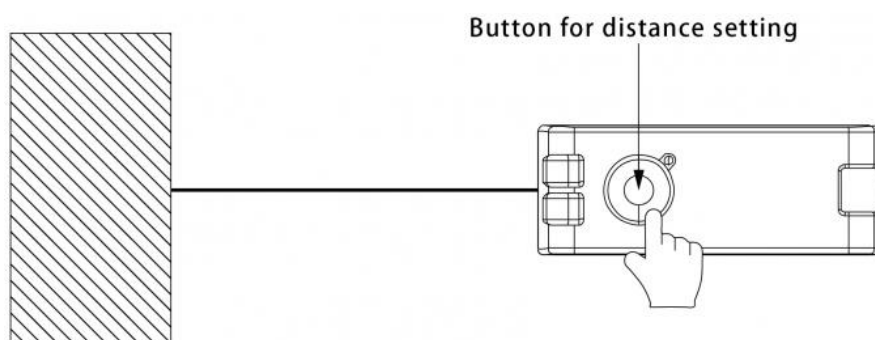
#### Technical Data

Detection method	Reflective type
Output	NPN output
Action mode	Set the TOF principle with one click
Detection distance	50~4000 mm
Light source	Red LED (940nm) IEC CLASS1
Supply voltage	DC12~24V $\pm 10\%$
Consumption of electricity	Power consumption is less than 480mW (power supply voltage is DC24V, consumption current is less than 20mA)
Control output	Load power supply voltage DC26.4V or less, load 80mA or less current collector open circuit output (NPN/PNP output varies depending on the model)
Output residual voltage	Residual voltage below 1V (load current less than 10mA) Residual voltage below 2V (load current less than 10~80mA)
Protection circuit	Power supply reverse connection protection/load short circuit protection/output reverse connection protection
Response time	Action and return: less than 100ms each
Ambient temperature	During operation: -20~+50°C, during storage: -40~+70°C (no freezing or condensation)
Ambient humidity	During operation: 35~85%RH, during storage: 35~95%RH (no freezing or condensation)
Ambient illumination	Sunlight: below 10.000lx
Protective structure	IEC60529 IP65

#### Dimensional Drawing

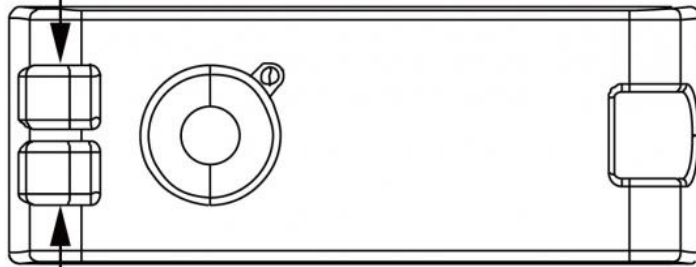


(1) Place the detected object at the desired position and press the teach pendant



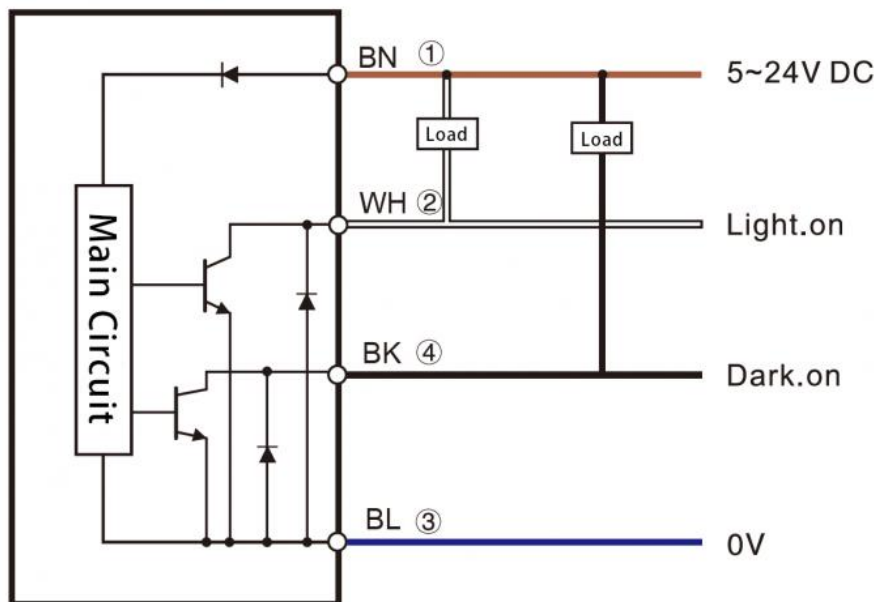
(2) Press the teaching button for more than 3 seconds until the traffic light flashes alternately. Release the button to complete teaching.

Red LED power indicator



Green LED power indicator

DC line 4-wire NPN output



**KRONZ** Kronz (guangzhou) Electronics Co., Ltd.



+8618924160375



sales02@kronz.cn



connector-industrial.com

6th Floor, B602 Building, No.10, Rong Jing 2nd Road, Yu Shan Guo Ji, Yong Ning Street, Zeng Cheng District, Guangzhou, P.R.China