



M12 Connectors Ethernet/IP Angled Male PVC Drag Chain Shielded M12 8 Pin X Code Connector

Our Product Introduction

Basic Information

- Place of Origin: Guangdong, China
- Brand Name: KRONZ
- Certification: CE
- Model Number: M1208XMA-2/E60K
- Minimum Order Quantity: 50
- Price: Negotiable
- Packaging Details: Polybag packing
- Delivery Time: 5-8 working days
- Payment Terms: T/T, Western Union, MoneyGram
- Supply Ability: 100000 pieces per month

KRONZ



Product Specification

- Cable: Cat6A 26AWG
- Coding: X-Code
- Pin: 8
- Current: 0.5A
- Wire Gauge: 4 X 2 X 0.14
- OD: 6.4
- Cable Color: Green
- Cable Outlet: Angled
- Highlight: **M12 8 Pin X Code Connector, PVC Drag Chain Shielded M12, Ethernet/IP Angled Male M12**

KRONZ



Product Description

M12 Connectors Ethernet/IP Angled Male PVC Drag Chain Shielded M12 8 Pin X Code Connector

Product Description

The M12 Ethernet/IP cable is specifically designed for industrial environments, featuring an X-coded angled cable outlet. It uses a Category 6A wire gauge of 4×2×0.14 (26 AWG), with a yellowish-green PVC outer sheath and drag chain, making it highly durable and wear-resistant. The double-shielded cable provides superior protection and excellent anti-interference capabilities. M12 connectors are widely used in industrial automation, particularly in applications that require high reliability and resistance to vibration.


KRONZ





Technical Data

Standard	IEC 61076-2-101
Contact nut material	Brass, nickle-plated
Contact surface material	Brass, gold-plated
Contact carrier material	PA, black
Housing material	TPU, black
Seal material	FPM/FKM
Insulation resistance	$\geq 100\text{M}\Omega$
Contact resistance	$\leq 5\text{m}\Omega$
Pollution degree	3
Ambient temperature	-25~+85
Mating cycles	>100
Degree of protection	IP67

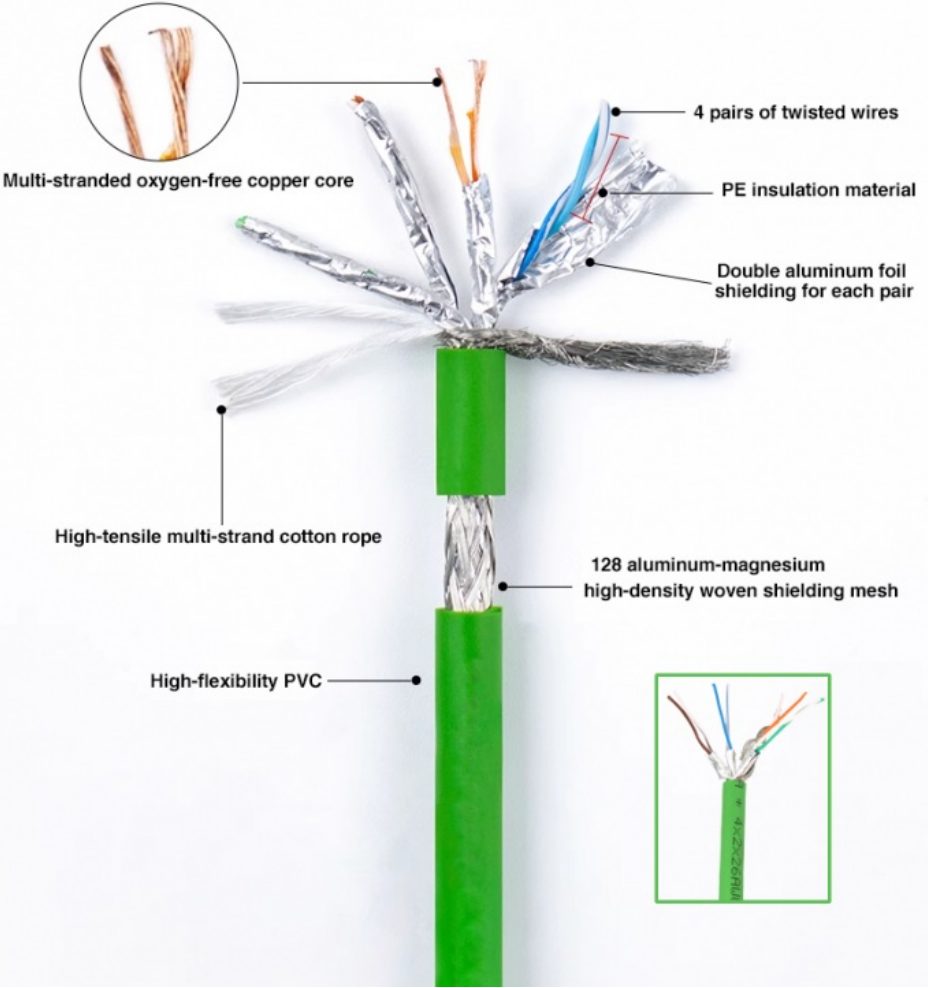
Pin assignment	Wire color	Coding	Rated current	Voltage	Wire gauge	Cable outlet	Length	Model No.
	1 = WH/OR 2 = OR 3 = WH/GN 4 = GN 5 = WH/BN 6 = BN 7 = WH/BU 8 = BU	X	0.5A	30V	4×2×0.14, (4×2×26AWG) yellowish green, PVC, drag chain, OD=6.4	Angled	2M	M1208XMA-2/E60K

Multi-layer dual shielding for interference resistance

Pure copper wire core
Aluminum foil shielding

Braided mesh shielding to reduce external signal interference

More stable data transmission



Company Profile

KRONZ

ABOUT US

KRONZ is a manufacturing enterprise located in Zengcheng District, Guangzhou City. We focus on providing customers with high-efficiency industrial automation solutions and related industrial products. After many years of innovation and development, KRONZ has complete product processing equipment and a professional team who are proficient in various automation technologies.

In order to improve the quality of products and production efficiency, we continue to introduce advanced production equipment and technology, strengthen investment in research and development. At present, our main products include Industrial Connectors, Inductive Sensors, Capacitive Sensors, Photoelectric Sensors, Ultrasonic Sensors, Industrial power supplies, Industrial fieldbus, RFID recognition systems, Industrial Ethernet Switches

We not only produce the orders of standard products, but also have ability to make customize production based on customer design drawings or samples.

Adhering to the principle of mutual benefit, we provide our customers with competitive prices , and perfect after-sales service. KRONZ's products have been sold in multiple countries, have won the trust and praise of customers. KRONZ expect to collaborate with you.

OUR FACTORY

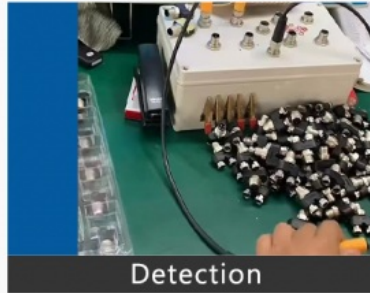


PRODUCTION PROCESS

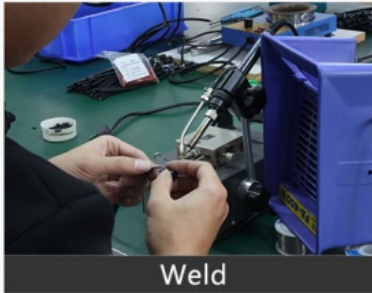
Kronz (Guangzhou) Electronics Co., Ltd.



Raw material



Detection



Weld



Injection molding



Winding



Package



Note:

Due to the wide range of our products, we cannot list all product pictures and corresponding product parameters. If you have other needs, please communicate with me. We can provide supplementary information and technical support. We Are Happy to Serve You.



KRONZ Kronz (guangzhou) Electronics Co., Ltd.



+8618924160375



sales02@kronz.cn



connector-industrial.com

6th Floor, B602 Building, No.10, Rong Jing 2nd Road, Yu Shan Guo Ji, Yong Ning Street, Zeng Cheng District, Guangzhou, P.R.China