



M12 IE Connectors 8 Pin X Code Cat6A 26AWG Female To Male PVC Drag Chain Shielded

Our Product Introduction

for more products please visit us on connector-industrial.com

Basic Information

- Place of Origin: Guangdong, China
- Brand Name: KRONZ
- Certification: CE
- Model Number: M1208XF-2-M1208XM/E60K
- Minimum Order Quantity: 50
- Price: Negotiable
- Packaging Details: Polybag packing
- Delivery Time: 5-8 working days
- Payment Terms: T/T, Western Union, MoneyGram
- Supply Ability: 100000 pieces per month

KRONZ



Product Specification

- Description: X Code IE Cable Connector M12
- Code: X-coding
- Contact: Male To Female
- Contact Nut Material: Nickle-plated
- Gender: Female And Male
- Cable Type: Cate6A
- Application: Ethernet
- Cable Length: 2m...10m
- Highlight: **PVC Drag Chain M12 IE Connectors, M12 IE Connectors 8 Pin, Cat6A M12 IE Connectors**

KRONZ



Product Description

M12 IE Connectors 8 Pin X Code Cat6A 26AWG Female to Male PVC Drag Chain Shielded

Product Description

The M1208XF-2-M1208XM/E60K has a female connector at one end and a male connector at the other end, and its length can be customized according to customers' requirements. This network cable is specifically designed for industrial scenarios, and its straight cable outlet adopts X-coding. The internal cable specification is a Category 6A cable with 4×2×0.14 (26 AWG). It is covered with a yellow-green PVC drag chain sheath, possessing extremely high durability and wear resistance. The double-shielded design endows it with excellent protection performance and outstanding anti-interference ability. The M12 connectors are widely used in the field of industrial automation, especially in applications with high requirements for reliability and anti-vibration performance.

KRONZ





Technical Data


Standard	IEC 61076-2-101
Contact nut material	Brass, nickle-plated
Contact surface material	Brass, gold-plated
Contact carrier material	PA, black
Housing material	TPU, black
Seal material	FPM/FKM
Insulation resistance	$\geq 100\text{M}\Omega$
Contact resistance	$\leq 5\text{m}\Omega$
Pollution degree	3
Ambient temperature	-25~+85
Mating cycles	>100
Degree of protection	IP67

M12 Pre-assembled IE Connecting Cable, 8PIN,coding:X

M12 Pre-assembled IE connecting cable, Female, Straight, Ethernet/IP

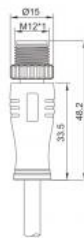


Technical data			
Standard	IEC 61076-2-101	Insulation resistance	≥100MΩ
Contact nut material	Brass, nickle-plated	Contact resistance	≤5mΩ
Contact surface material	Brass, gold-plated	Pollution degree	3
Contact carrier material	PA, black	Ambient temperature	-25~+85℃
Housing material	TPU, black	Mating cycles	>100
Seal material	FPM/FKM	Degree of protection	IP67


Pin assignment	Wire color	Coding	Rated current	Voltage	Wire gauge	Cable outlet	Length	Part No.
	1 = WH/OR 2 = OR 3 = WH/GN 4 = GN 5 = WH/BN 6 = BN 7 = WH/BU 8 = BU	X	0.5A	30V	4×2×0.14,shielded (4×2×26AWG) yellowish green, PVC,drag chain, OD=6.4	Straight	2M	M1208XF-2/E60K
	5M						M1208XF-5/E60K	
	10M						M1208XF-10/E60K	

M12 Pre-assembled IE Connecting Cable, 8PIN,coding:X

M12 Pre-assembled IE connecting cable, Male, Straight, Ethernet/IP



Technical data			
Standard	IEC 61076-2-101	Insulation resistance	≥100MΩ
Contact nut material	Brass, nickle-plated	Contact resistance	≤5mΩ
Contact surface material	Brass, gold-plated	Pollution degree	3
Contact carrier material	PA, black	Ambient temperature	-25~+85℃
Housing material	TPU, black	Mating cycles	>100
Seal material	FPM/FKM	Degree of protection	IP67

Pin assignment	Wire color	Coding	Rated current	Voltage	Wire gauge	Cable outlet	Length	Part No.
	1 = WH/OR 2 = OR 3 = WH/GN 4 = GN 5 = WH/BN 6 = BN 7 = WH/BU 8 = BU	X	0.5A	30V	4×2×0.14,shielded (4×2×26AWG) yellowish green, PVC,drag chain, OD=6.4	Straight	2M	M1208XM-2/E60K
	5M						M1208XM-5/E60K	
	10M						M1208XM-10/E60K	

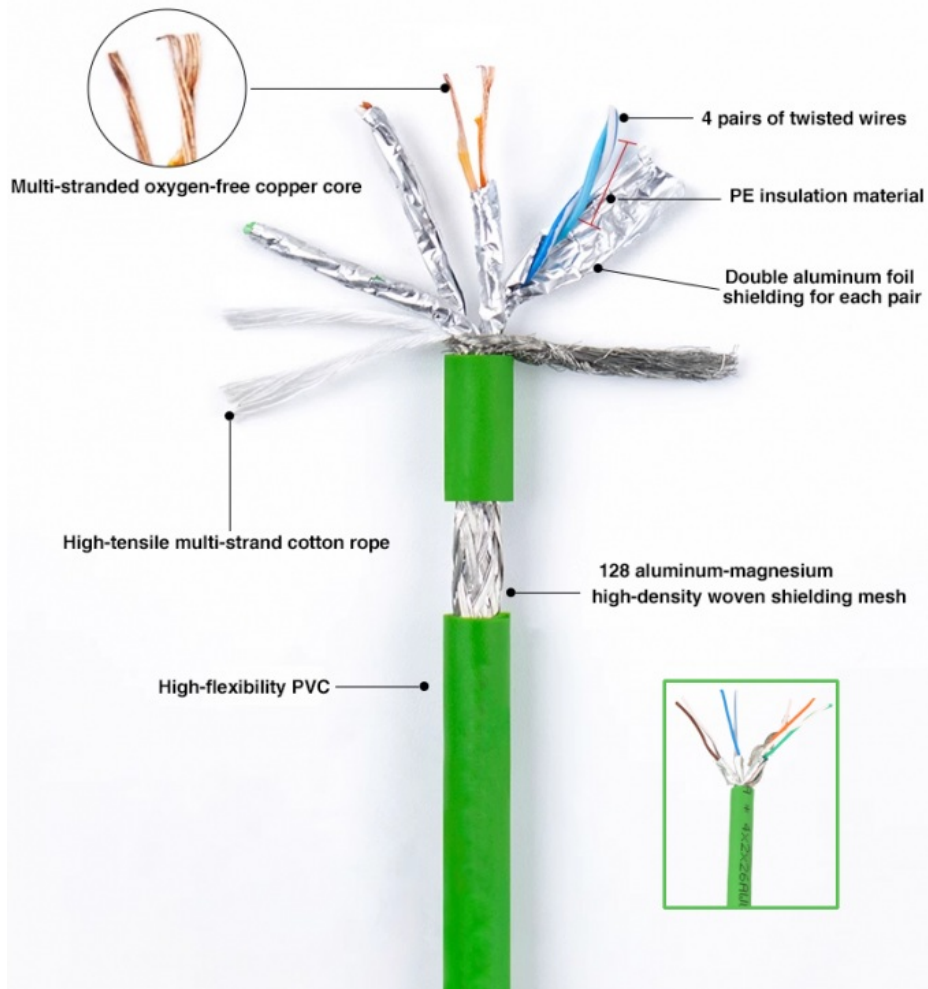
Multi-layer dual shielding for interference resistance

Pure copper wire core

Aluminum foil shielding

Braided mesh shielding to reduce external signal interference

More stable data transmission



Company Profile

KRONZ

ABOUT US

KRONZ is a manufacturing enterprise located in Zengcheng District, Guangzhou City. We focus on providing customers with high-efficiency industrial automation solutions and related industrial products. After many years of innovation and development, KRONZ has complete product processing equipment and a professional team who are proficient in various automation technologies.

In order to improve the quality of products and production efficiency, we continue to introduce advanced production equipment and technology, strengthen investment in research and development. At present, our main products include Industrial Connectors, Inductive Sensors, Capacitive Sensors, Photoelectric Sensors, Ultrasonic Sensors, Industrial power supplies, Industrial fieldbus, RFID recognition systems, Industrial Ethernet Switches

We not only produce the orders of standard products, but also have ability to make customize production based on customer design drawings or samples.

Adhering to the principle of mutual benefit, we provide our customers with competitive prices, and perfect after-sales service. KRONZ's products have been sold in multiple countries, have won the trust and praise of customers. KRONZ expect to collaborate with you.

OUR FACTORY

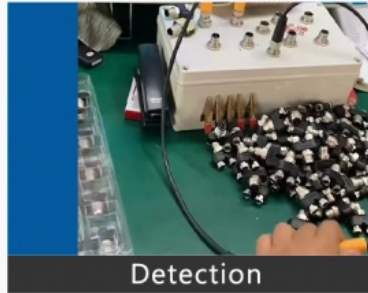


PRODUCTION PROCESS

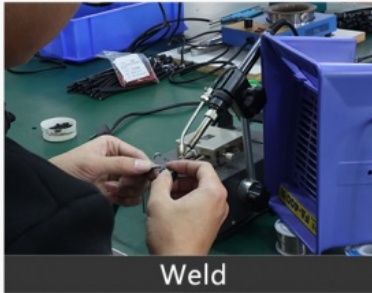
Kronz (Guangzhou) Electronics Co., Ltd.



Raw material



Detection



Weld



Injection molding



Winding



Package



Note:

Due to the wide range of our products, we cannot list all product pictures and corresponding product parameters. If you have other needs, please communicate with me. We can provide supplementary information and technical support. We Are Happy to Serve You.



KRONZ Kronz (guangzhou) Electronics Co., Ltd.

+8618924160375

sales02@kronz.cn

connector-industrial.com

6th Floor, B602 Building, No.10, Rong Jing 2nd Road, Yu Shan Guo Ji, Yong Ning Street, Zeng Cheng District, Guangzhou, P.R.China