



M12 Connectors Cat6A 26AWG Female PVC Drag Chain Shielded X-coding 8pin Connectoer

Our Product Introduction

Basic Information

- Place of Origin: Guangdong, China
- Brand Name: KRONZ
- Certification: CE
- Model Number: M1208XF-2/E60K
- Minimum Order Quantity: 50
- Price: Negotiable
- Packaging Details: Polybag packing
- Delivery Time: 5-8 working days
- Payment Terms: T/T, Western Union, MoneyGram
- Supply Ability: 100000 pieces per month



Product Specification

- Description: M12 IE Cable Connector
- Coding: X
- Contact: Female
- Voltage: 30V
- Wire Gauge: 4 X 2 X 0.14, Shielded
- Cable: Cat6A Cable
- Application: Ethernet/IP
- Cable Length: 2m
- Highlight: 8pin M12 Connectors,
PVC Drag Chain M12 Connectors,
Cat6A M12 Connectors



Product Description

M12 Connectors Cat6A 26AWG Female PVC Drag Chain Shielded X-coding 8pin Connectoer

Product Description

The M1208XF-2/E60K Ethernet cable features a female connector on one end, with the other end capable of connecting to other devices. Its length can be customized according to customer requirements. This cable is specifically designed for industrial applications, with an X-coded straight cable. The internal cable is a Class 6A cable, with a core structure of 4×2×0.14 (26 AWG). It is covered with a yellow-green PVC drag chain sheath, providing excellent durability and wear resistance. The double shielding design ensures outstanding protective performance and superior anti-interference capabilities.

The M12 connector is widely used in industrial automation, particularly in applications that require high reliability and vibration resistance. It is ideal for scenarios such as robot welding arms in automotive manufacturing, automated assembly equipment, and more. These systems require stable, high-speed data transmission to ensure precise control during production processes. The double shielding design of the M1208XF-2/E60K Ethernet cable effectively resists electromagnetic interference generated by devices like motors and frequency converters on the production line, ensuring accurate signal transmission between robots and control systems for precise welding, assembly, and other operations.

KRONZ



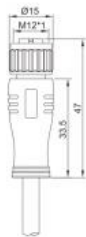


Technical Data

Standard	IEC 61076-2-101
Contact nut material	Brass, nickle-plated
Contact surface material	Brass, gold-plated
Contact carrier material	PA, black
Housing material	TPU, black
Seal material	FPM/FKM
Insulation resistance	$\geq 100\text{M}\Omega$
Contact resistance	$\leq 5\text{m}\Omega$
Pollution degree	3
Ambient temperature	-25~+85
Mating cycles	>100
Degree of protection	IP67

M12 Pre-assembled IE Connecting Cable, 8PIN,coding:X

M12 Pre-assembled IE connecting cable, Female, Straight, Ethernet/IP



Technical data			
Standard	IEC 61076-2-101	Insulation resistance	≥100MΩ
Contact nut material	Brass, nickle-plated	Contact resistance	≤5mΩ
Contact surface material	Brass, gold-plated	Pollution degree	3
Contact carrier material	PA, black	Ambient temperature	-25~+85℃
Housing material	TPU, black	Mating cycles	>100
Seal material	FPM/FKM	Degree of protection	IP67

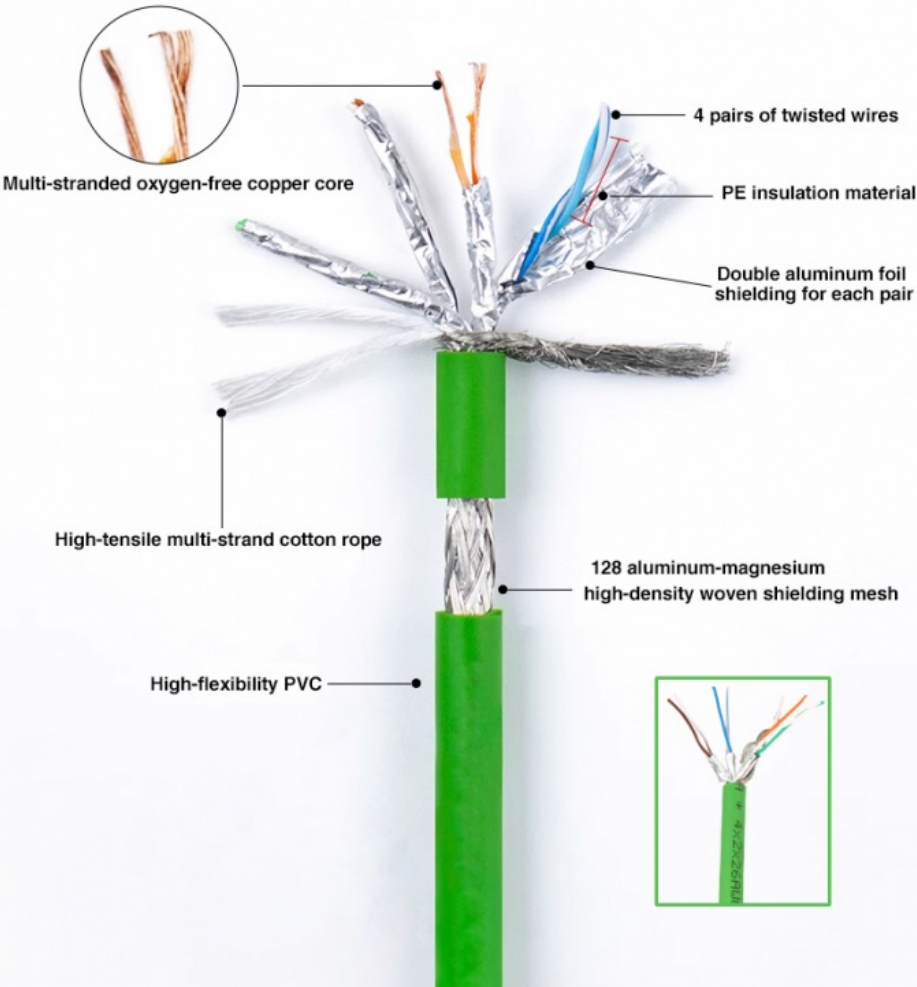
Pin assignment	Wire color	Coding	Rated current	Voltage	Wire gauge	Cable outlet	Length	Part No.
	1 = WH/OR 2 = OR 3 = WH/GRN 4 = GRN 5 = WH/BN 6 = BN 7 = WH/BU 8 = BU	X	0.5A	30V	4×2×0.14,shielded (4×2×26AWG) yellowish green, PVC,drag chain, OD=6.4	Straight	2M 5M 10M	M1208XF-2/E60K M1208XF-5/E60K M1208XF-10/E60K

Multi-layer dual shielding for interference resistance

Pure copper wire core
Aluminum foil shielding

Braided mesh shielding to reduce external signal interference

More stable data transmission



KRONZ

ABOUT US

KRONZ is a manufacturing enterprise located in Zengcheng District, Guangzhou City. We focus on providing customers with high-efficiency industrial automation solutions and related industrial products. After many years of innovation and development, KRONZ has complete product processing equipment and a professional team who are proficient in various automation technologies.

In order to improve the quality of products and production efficiency, we continue to introduce advanced production equipment and technology, strengthen investment in research and development. At present, our main products include Industrial Connectors, Inductive Sensors, Capacitive Sensors, Photoelectric Sensors, Ultrasonic Sensors, Industrial power supplies, Industrial fieldbus, RFID recognition systems, Industrial Ethernet Switches

We not only produce the orders of standard products, but also have ability to make customize production based on customer design drawings or samples.

Adhering to the principle of mutual benefit, we provide our customers with competitive prices , and perfect after-sales service. KRONZ's products have been sold in multiple countries, have won the trust and praise of customers. KRONZ expect to collaborate with you.

OUR FACTORY

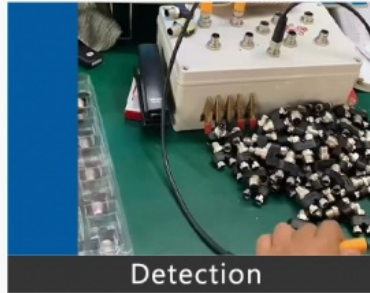


PRODUCTION PROCESS

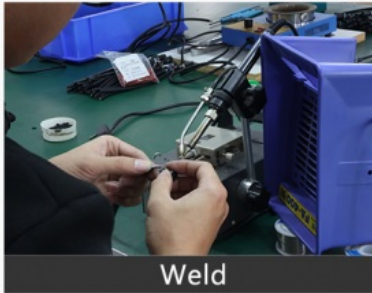
Kronz (Guangzhou) Electronics Co., Ltd.



Raw material



Detection



Weld



Injection molding



Winding



Package



Note:

Due to the wide range of our products, we cannot list all product pictures and corresponding product parameters. If you have other needs, please communicate with me. We can provide supplementary information and technical support. We Are Happy to Serve You.



KRONZ Kronz (guangzhou) Electronics Co., Ltd.



+8618924160375



sales02@kronz.cn



connector-industrial.com

6th Floor, B602 Building, No.10, Rong Jing 2nd Road, Yu Shan Guo Ji, Yong Ning Street, Zeng Cheng District, Guangzhou, P.R.China