



M12 Connector 2 3 4 5 6 7 8 12 Pin A B D Code Screw Locking Plug Male Angled

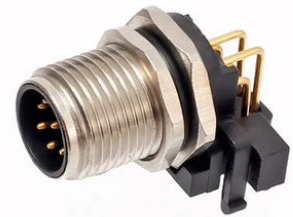
Our Product Introduction

for more products please visit us on connector-industrial.com

Basic Information

- Place of Origin: Guangdong, China
- Brand Name: KRONZ
- Certification: CE
- Model Number: F1203MA-PF/M12C
- Minimum Order Quantity: 50 pieces
- Price: Negotiable
- Packaging Details: Polybag packing
- Delivery Time: 5-8 working days
- Payment Terms: T/T, Western Union, MoneyGram
- Supply Ability: 100000 pieces per month

KRONZ



Product Specification

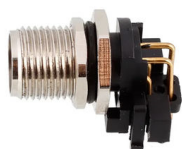
- Description: M12 Angled Connector
- Type: PCB
- Rated Power: 4A/250V
- Pin: 2/3/4/5/6/7/8/12
- Code: A/B/D
- Rated Impulse Voltage: 2500V
- Contact Resistance: ≤ 5
- Highlight: Angled M12 Connector, 2 Pin M12 Connector, Screw Locking M12 Connector

KRONZ



More Images

KRONZ



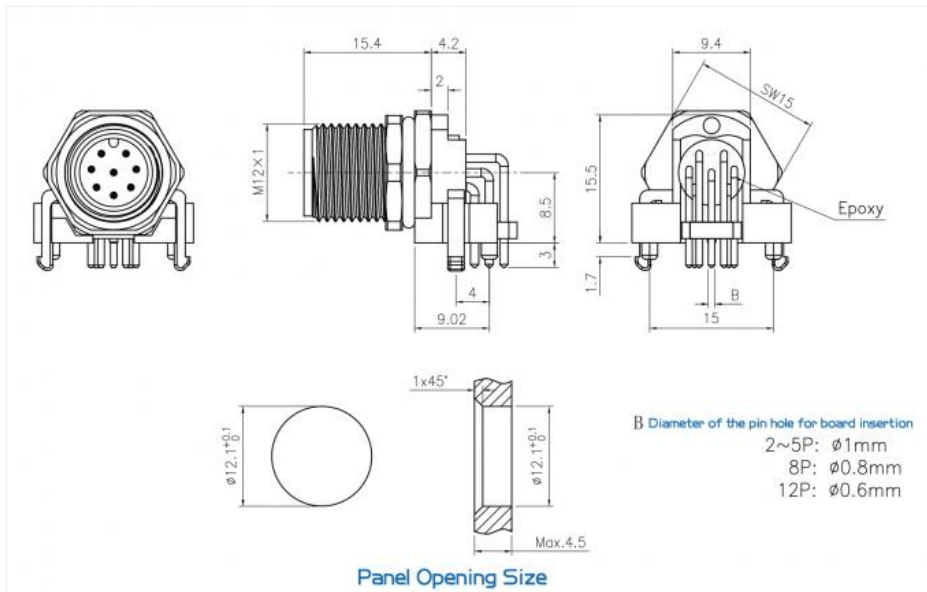
KRONZ



KRONZ



M12 Connector 2 3 4 5 6 7 8 12 Pin A B D Code Screw Locking Plug Male Angled



KRONZ





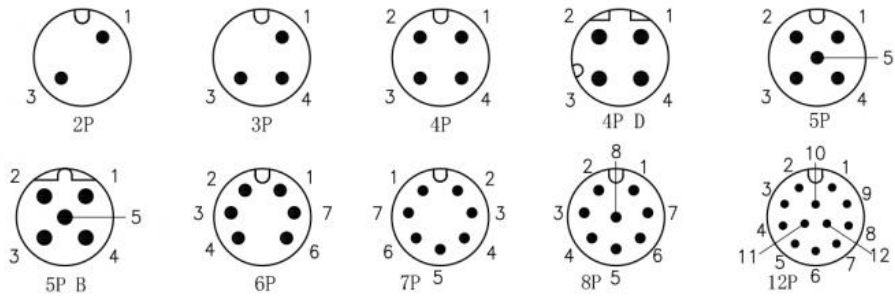
Product Specifications

Attribute	Value
Description	M12 Angled Connector
Type	PCB
Rated Power	4A/250V
Pin	2/3/4/5/6/7/8/12
Code	A/B/D
Rated Impulse Voltage	2500V
Contact Resistance	≤ 5

Technical Data

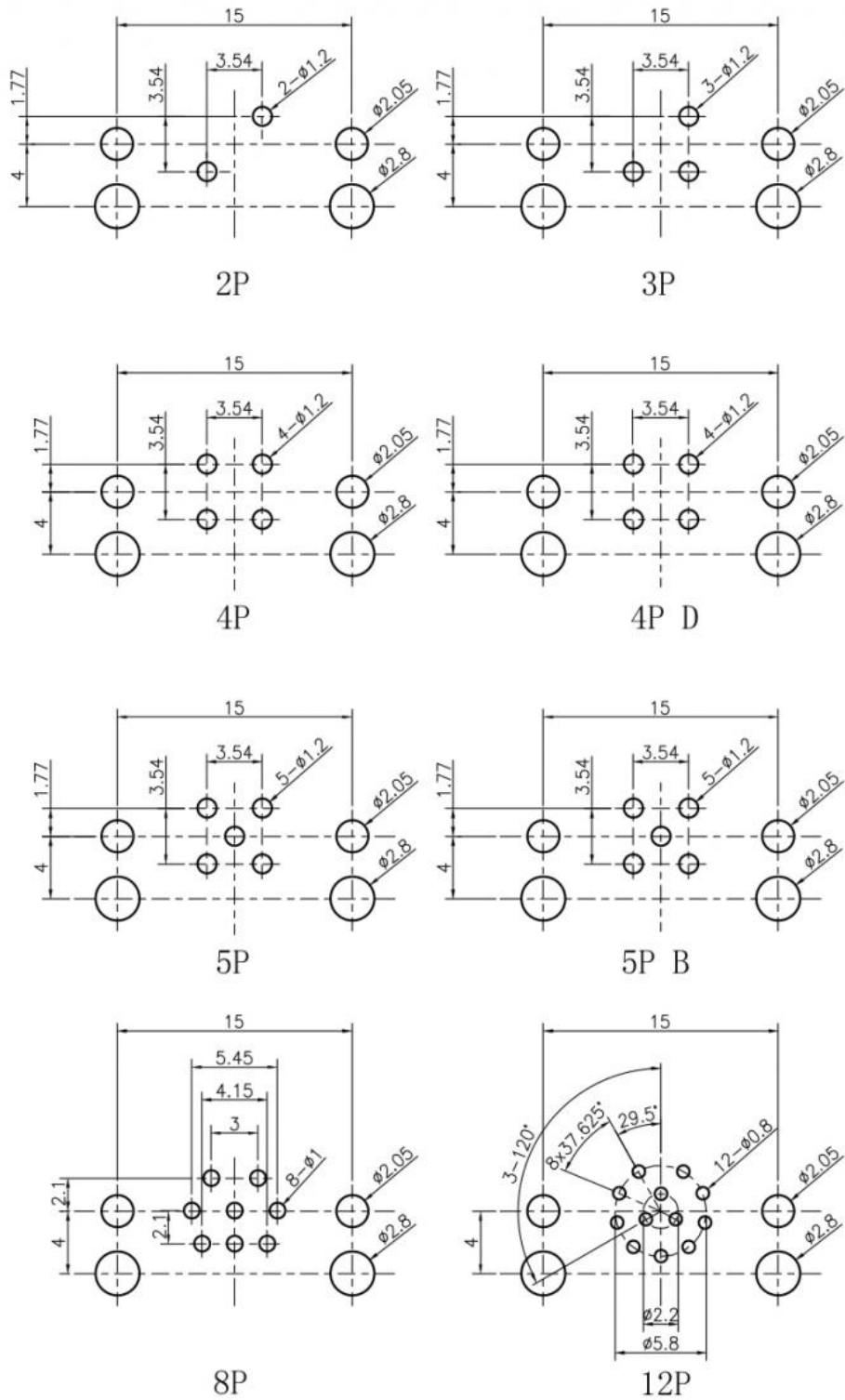
Standard	IEC 61076-2-101
Contact nut material	Brass, nickel-plated
Contact surface material	Brass, gold-plated
Contact carrier material	PA, black
Housing material	PBT/PA, black
Seal material	FPM/FKM
Insulation resistance	$\geq 100M\Omega$
Contact resistance	$\leq 5m\Omega$
Pollution degree	3
Ambient temperature	-40~+80
Mating cycles	≥ 500

Pin Assignment



P. C. B.

Hole Opening Size



[About Our Company](#)

KRONZ

ABOUT US

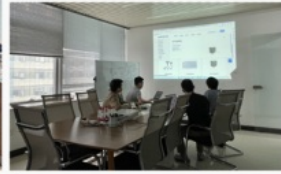
KRONZ is a manufacturing enterprise located in Zengcheng District, Guangzhou City. We focus on providing customers with high-efficiency industrial automation solutions and related industrial products. After many years of innovation and development, KRONZ has complete product processing equipment and a professional team who are proficient in various automation technologies.

In order to improve the quality of products and production efficiency, we continue to introduce advanced production equipment and technology, strengthen investment in research and development. At present, our main products include Industrial Connectors, Inductive Sensors, Capacitive Sensors, Photoelectric Sensors, Ultrasonic Sensors, Industrial power supplies, Industrial fieldbus, RFID recognition systems, Industrial Ethernet Switches

We not only produce the orders of standard products, but also have ability to make customize production based on customer design drawings or samples.

Adhering to the principle of mutual benefit, we provide our customers with competitive prices, and perfect after-sales service. KRONZ's products have been sold in multiple countries, have won the trust and praise of customers. KRONZ expect to collaborate with you.

OUR FACTORY

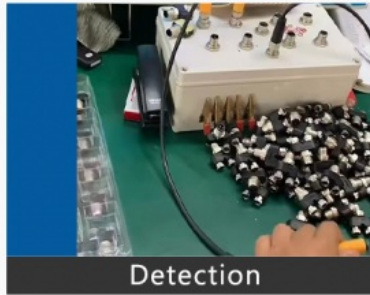


PRODUCTION PROCESS

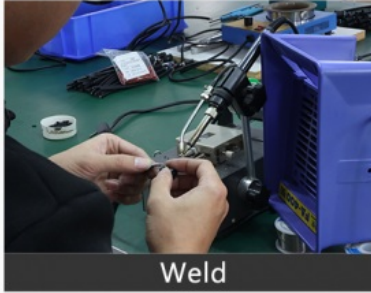
Kronz (Guangzhou) Electronics Co., Ltd.



Raw material



Detection



Weld



Injection molding



Winding



Package

Logistics and Payment



1. Samples and small orders can be shipped with fast shipment method, by air and by express. Bulk order will ship by sea, by air, by train, by truck etc.
2. We also can send the goods to your agent warehouse.
3. If you need any more shipping method, please feel free to contact with us.



Note:

Due to the wide range of our products, we cannot list all product pictures and corresponding product parameters. If you have other needs, please communicate with me. We can provide supplementary information and technical support.
We Are Happy to Serve You.



CONTACT US

KRONZ Kronz (guangzhou) Electronics Co., Ltd.



+8618924160375



sales02@kronz.cn



connector-industrial.com

