



7/8" Connector For Power Applications 9A Rated Current Thread 7/8-16UN Circular Connectors

Our Product Introduction

Basic Information

- Place of Origin: Guangdong, China
- Brand Name: KRONZ
- Certification: CE
- Model Number: F7804M-0.5R-13.5
- Minimum Order Quantity: 5
- Price: Negotiable
- Packaging Details: Polybag packing
- Delivery Time: 5-8 working days
- Payment Terms: T/T, Western Union, MoneyGram
- Supply Ability: 100000 pieces per month

KRONZ



Product Specification

- Housing Material: Brass, Nickle-plated
- Pollution Degree: 3
- Contacts Termination: Solder Cup
- Application: Industrial Automation
- Maximum Pressure: 150 PSI
- Mounting Type: Front Mounting
- Cable Outlet: Straight
- Material: Brass
- Highlight: 9A Rated Current 7/8" Connector, Nickle Plated 7/8" Connector

KRONZ



More Images

KRONZ



Product Description

Product Description:

The 7/8" Connector is a high-quality metal shell industrial connector designed for reliable and durable performance in various applications. With contacts termination through solder cup, this connector ensures a secure and robust connection for your electrical needs.

One of the key features of the 7/8" Connector is its exceptional durability, capable of withstanding over 100 mating cycles without compromising its performance. This makes it a reliable choice for applications where frequent connections and disconnections are required.

The cable outlet of the 7/8" Connector is straight, providing a convenient and practical solution for routing cables in a straight line. This configuration helps in maintaining a neat and organized cable layout, contributing to efficient cable management in your setup.

Operating within an ambient temperature range of -25~+85 , the 7/8" Connector is suitable for use in a wide range of environments and conditions. Whether it is extreme cold or moderate heat, this connector can consistently deliver optimal performance without any issues.

Features:

Product Name: 7/8" Circular Connector

Seal Material: FPM/FKM

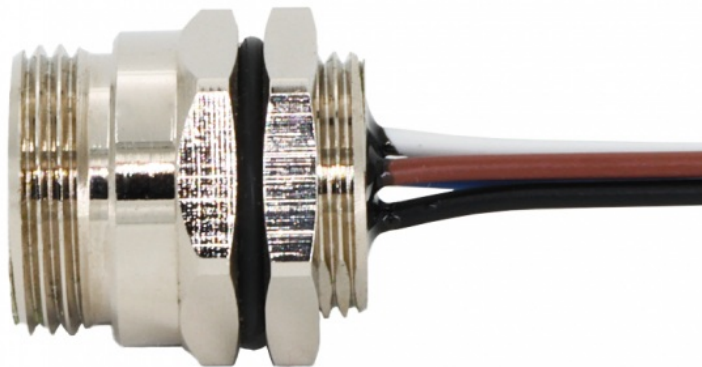
Insulation resistance: $\geq 100\text{M}\Omega$

Thread: 7/8"-16UN

Coding: A

Material: Brass

KRONZ





Technical Parameters:

Connection Type	Male
Seal Material	FPM/FKM
Usage	For Power Applications
Contact resistance	≤5mΩ
Pollution degree	3
Contact Carrier Material	PA, Black
Contact Nut Material	Brass, Nickle-plated
Contacts Termination	Solder Cup
Rated Current	9A
Material	Brass

Applications:

KRONZ 7/8" Connector is a reliable and high-quality product designed for various industrial automation applications. As a leading 7/8" Connector Manufacturer, KRONZ offers a versatile and durable Quick-Connect Industrial Connector that is ideal for demanding industrial environments.

Originating from Guangdong, China, the KRONZ 7/8" Connector is crafted with precision and meets the CE certification standards, ensuring its quality and safety. The product is suitable for a wide range of scenarios due to its robust design and excellent performance. With a minimum order quantity of 5 pieces and negotiable pricing, the KRONZ 7/8" Connector provides flexibility for both small-scale and large-scale industrial automation projects. The product is packaged securely in polybags for safe transportation and storage.

Thanks to its efficient delivery system, customers can expect their orders to be delivered within 5-8 working days, allowing for quick deployment in time-sensitive projects. The flexible payment terms including T/T, Western Union, and MoneyGram make it convenient for customers to complete transactions.

With a remarkable supply ability of 100,000 pieces per month, the KRONZ 7/8" Connector ensures a steady availability of the product for industrial automation applications. The connection type of the connector is male, offering a secure and stable connection for industrial equipment.

Featuring an IP67 degree of protection, front mounting, and a pollution degree of 3, the KRONZ 7/8" Connector is suitable for use in challenging industrial environments where reliability and durability are paramount. Its application in industrial automation scenarios makes it a versatile and essential component for various machinery and equipment.

KRONZ

ABOUT US

KRONZ is a manufacturing enterprise located in Zengcheng District, Guangzhou City. We focus on providing customers with high-efficiency industrial automation solutions and related industrial products. After many years of innovation and development, KRONZ has complete product processing equipment and a professional team who are proficient in various automation technologies.

In order to improve the quality of products and production efficiency, we continue to introduce advanced production equipment and technology, strengthen investment in research and development. At present, our main products include Industrial Connectors, Inductive Sensors, Capacitive Sensors, Photoelectric Sensors, Ultrasonic Sensors, Industrial power supplies, Industrial fieldbus, RFID recognition systems, Industrial Ethernet Switches

We not only produce the orders of standard products, but also have ability to make customize production based on customer design drawings or samples.

Adhering to the principle of mutual benefit, we provide our customers with competitive prices , and perfect after-sales service. Kronz's products have been sold in multiple countries, have won the trust and praise of customers. KRONZ expect to collaborate with you.

OUR FACTORY

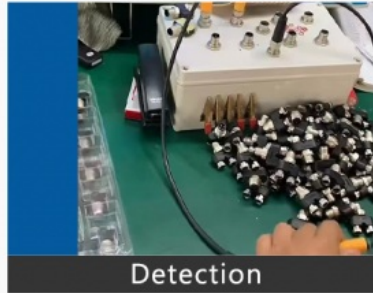


PRODUCTION PROCESS

Kronz (Guangzhou) Electronics Co., Ltd.



Raw material



Detection



Weld



Injection molding



Winding



Package

Certifications



Logistics and Payment



1. Samples and small orders can be shipped with fast shipment method, by air and by express. Bulk order will ship by sea, by air, by train, by truck etc.
2. We also can send the goods to your agent warehouse.
3. If you need any more shipping method, please feel free to contact with us.



Note:

Due to the wide range of our products, we cannot list all product pictures and corresponding product parameters. If you have other needs, please communicate with me. We can provide supplementary information and technical support. We Are Happy to Serve You.



CONTACT US

Support and Services:

The 7/8" Connector product comes with comprehensive Product Technical Support and Services to ensure customer satisfaction. Our team of experts is available to assist with any technical queries or issues that may arise during installation or operation of the product. Whether you need guidance on setup, troubleshooting, or maintenance, our support team is dedicated to providing timely and effective solutions.



+8618924160375



sales02@kronz.cn



connector-industrial.com

6th Floor, B602 Building, No.10, Rong Jing 2nd Road, Yu Shan Guo Ji, Yong Ning Street, Zeng Cheng District,
Guangzhou, P.R.China