



Industrial TPU 7/8" Straight Connector With TPU Housing Material For Heavy-Duty Equipment

Our Product Introduction

For more products please visit us on connector-industrial.com

Basic Information

- Place of Origin: Guangdong, China
- Brand Name: KRONZ
- Certification: CE
- Model Number: M7803FA-2/P00K
- Minimum Order Quantity: 5
- Price: Negotiable
- Packaging Details: Polybag packing
- Delivery Time: 5-8 working days
- Payment Terms: T/T, Western Union, MoneyGram
- Supply Ability: 100000 pieces per month

KRONZ

Product Specification

- Wire Gauge: 3 X 0.15 (3x16AWG)
- Cable Outlet: Straight
- Contact Carrier Material: PA, Black
- Insulation Resistance: $\geq 100M\Omega$
- Seal Material: FPM/FKM
- Shielded: No
- Usage: For Power Applications
- Housing Material: TPU, Black
- Highlight: Industrial TPU 7/8" Straight Connector, Heavy-Duty Equipment 7/8" Straight Connector

KRONZ

More Images

KRONZ

Product Description

Product Description:

The 7/8" Connector is a versatile and reliable choice for various industrial applications, offering a robust solution for connecting cables with ease. This Metal Shell Industrial Connector is designed to meet the demands of industrial control systems, providing a secure and durable connection for seamless operation.

With a cable length option of 2/5/10 meters or customizable to suit your specific needs, this Multi-Pin Industrial Connector offers flexibility and convenience in installations. Whether you require a standard length or a tailored solution, this connector can accommodate your requirements with ease.

Designed for long-lasting performance, this 7/8" Connector boasts a high mating cycle rating of over 100 cycles, ensuring reliable connectivity over extended periods of use. This feature makes it ideal for applications where frequent connections and disconnections are required, providing peace of mind and consistent performance.

Equipped with solder cup contacts termination, this connector offers a secure and stable connection between cables and devices. The solder cup design ensures a strong bond that can withstand vibrations and environmental challenges, making it a dependable choice for industrial environments.

When it comes to insulation resistance, this Industrial Control Connector exceeds expectations with a minimum rating of $\geq 100\text{M}\Omega$. This high level of insulation resistance ensures that the connector can maintain reliable performance even in challenging conditions, reducing the risk of electrical issues and ensuring safe operation.

Constructed from high-quality brass material, this connector combines durability with conductivity for optimal performance. The brass construction provides excellent corrosion resistance and conductivity, ensuring a reliable and efficient connection for your industrial control systems.

Overall, the 7/8" Connector is a reliable and versatile choice for industrial applications, offering a secure and durable connection solution for your connectivity needs. With its high mating cycle rating, solder cup contacts termination, excellent insulation resistance, and sturdy brass construction, this connector delivers consistent performance in demanding industrial environments.

Features:

Product Name: 7/8"-Connector

Seal Material: FPM/FKM

Cable Outlet: Straight

Contact Nut Material: Brass, Nickel-plated

Connection Type: Female

Cable Length: 2/5/10meter Or Customized

KRONZ





Technical Parameters:

| | |
|----------------------|------------------------|
| Mating cycles | >100 |
| Contact Nut Material | Brass, Nickle-plated |
| Usage | For Power Applications |
| Wire gauge | 3 X 0.15 (3x16AWG) |
| Cable Outlet | Straight |
| Connection Type | Female |
| Shielded | No |
| Voltage | 600V |
| Contact resistance | ≤5mΩ |
| Pollution degree | 3 |

Applications:

KRONZ 7/8" Connector is a versatile and reliable product designed for various industrial automation applications. With its high-quality construction and excellent performance, this connector is ideal for a wide range of scenarios.

Product Application Occasions and Scenarios:

1. Wind Energy Connectors: The KRONZ 7/8" Connector is well-suited for use in wind energy applications. Its durable design and superior insulation resistance make it a perfect choice for connecting critical components in wind turbines.

2. Industrial Automation: This connector is specially crafted for industrial automation settings. Its straight cable outlet and coding feature ensure a secure and efficient connection, making it an essential component in automated systems.

3. Machinery Manufacturing: The KRONZ 7/8" Industrial Connector is an excellent fit for machinery manufacturing processes. Its high mating cycles and CE certification guarantee long-lasting performance in demanding manufacturing environments.

4. Electrical Equipment: Whether in factories or power plants, this connector is a reliable solution for connecting electrical equipment. Its superior insulation resistance of ≥100MΩ ensures safe and stable connections for various electrical applications.

With a minimum order quantity of 5 pieces and negotiable pricing, the KRONZ 7/8" Connector offers flexibility for both small and large-scale industrial projects. Each connector is meticulously packaged in polybags to ensure protection during transit, with a delivery time of 5-8 working days.

Payment terms include T/T, Western Union, and MoneyGram, providing convenient options for customers worldwide. Originating from Guangdong, China, this connector boasts a supply ability of 100,000 pieces per month, ensuring continuous availability for your industrial automation needs.

KRONZ

ABOUT US

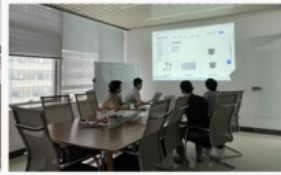
KRONZ is a manufacturing enterprise located in Zengcheng District, Guangzhou City. We focus on providing customers with high-efficiency industrial automation solutions and related industrial products. After many years of innovation and development, KRONZ has complete product processing equipment and a professional team who are proficient in various automation technologies.

In order to improve the quality of products and production efficiency, we continue to introduce advanced production equipment and technology, strengthen investment in research and development. At present, our main products include Industrial Connectors, Inductive Sensors, Capacitive Sensors, Photoelectric Sensors, Ultrasonic Sensors, Industrial power supplies, Industrial fieldbus, RFID recognition systems, Industrial Ethernet Switches

We not only produce the orders of standard products, but also have ability to make customize production based on customer design drawings or samples.

Adhering to the principle of mutual benefit, we provide our customers with competitive prices , and perfect after-sales service. Kronz's products have been sold in multiple countries, have won the trust and praise of customers. KRONZ expect to collaborate with you.

OUR FACTORY

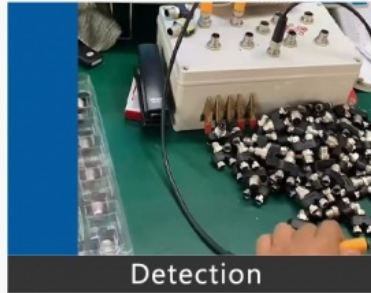


PRODUCTION PROCESS

Kronz (Guangzhou) Electronics Co., Ltd.



Raw material



Detection



Weld



Injection molding



Winding



Package

Customization:

Product Customization Services for the 7/8" Connector:

- Brand Name: KRONZ
- Model Number: /
- Place of Origin: Guangdong, China
- Certification: CE
- Minimum Order Quantity: 5
- Price: Negotiable
- Packaging Details: Polybag packing
- Delivery Time: 5-8 working days
- Payment Terms: T/T, Western Union, MoneyGram
- Supply Ability: 100000 pieces per month
- Mating cycles: >100
- Cable Length: 2/5/10meter Or Customized
- Wire color: 1=GN/YE,2=BN,3=BU
- Cable Outlet: Straight
- Usage: For Power Applications
- Keywords: Industrial Automation Connector, Quick-Connect Industrial Connector, Vibration-Resistant Connector

Certifications



Support and Services:

The Product Technical Support and Services for the 7/8" Connector product include troubleshooting assistance, installation guidance, and product maintenance information. Our team of experts is available to help you with any issues or questions you may have regarding the 7/8" Connector. Additionally, we offer warranty support and repair services to ensure the optimal performance and longevity of your product.

Logistics and Payment



1. Samples and small orders can be shipped with fast shipment method, by air and by express. Bulk order will ship by sea, by air, by train, by truck etc.
2. We also can send the goods to your agent warehouse.
3. If you need any more shipping method, please feel free to contact with us.



Note:

Due to the wide range of our products, we cannot list all product pictures and corresponding product parameters. If you have other needs, please communicate with me. We can provide supplementary information and technical support. We Are Happy to Serve You.



KRONZ Kronz (guangzhou) Electronics Co., Ltd.



+8618924160375



sales02@kronz.cn



connector-industrial.com

6th Floor, B602 Building, No.10, Rong Jing 2nd Road, Yu Shan Guo Ji, Yong Ning Street, Zeng Cheng District, Guangzhou, P.R.China

