



Industrial Automation Connectors 7/8" Cable Connector With Superior Performance

Our Product Introduction

For more products please visit us on connector-industrial.com

Basic Information

- Place of Origin: Guangdong, China
- Brand Name: KRONZ
- Certification: CE
- Model Number: M7805F-2/P00K
- Minimum Order Quantity: 5
- Price: Negotiable
- Packaging Details: Polybag packing
- Delivery Time: 5-8 working days
- Payment Terms: T/T, Western Union, MoneyGram
- Supply Ability: 100000 pieces per month

KRONZ

Product Specification

- Contact Carrier Material: PA, Black
- Description: 7/8" Cable Connector
- Cable Material: PVC, Black
- Pollution Degree: 3
- Cable Length: 2/5/10meter Or Customized
- Contact Surface Material: Brass, Gold-plated
- Seal Material: FPM/FKM
- Degree Of Protection: IP67
- Highlight: Industrial Automation Cable Connector,
Superior Performance 7/8" Cable Connector,
Industrial Automation 7/8" Cable Connector

KRONZ

More Images

KRONZ

Product Description

Product Description:

The 7/8" Connector is a versatile and reliable Quick-Connect Industrial Connector designed for various railway and transportation applications. With a robust design and high-quality materials, this connector is built to withstand the rigors of frequent use in demanding environments.

One of the standout features of the 7/8" Connector is its impressive durability, boasting a high mating cycle of over 100. This means that it can be connected and disconnected numerous times without compromising performance, making it ideal for applications where frequent connections are necessary.

In addition to its durability, this Railway and Transportation Connector offers excellent electrical insulation with an insulation resistance of at least 100MΩ. This ensures reliable and safe operation even in challenging conditions, providing peace of mind to users in the railway and transportation industry.

The 7/8" Connector is designed with convenience and efficiency in mind, featuring a coding of A for easy identification and connection.

This coding system simplifies the installation process, reducing the risk of errors and ensuring a secure connection every time.

Furthermore, this connector offers flexibility in installation with the option of a straight or angled cable outlet. This versatility allows users to choose the most suitable configuration for their specific application, providing greater adaptability and ease of use.

When it comes to compatibility, the 7/8" Connector supports multiple wire gauge options, including 3×0.15 (3×16AWG), 4×0.15 (4×16AWG), and 5×0.15 (5×16AWG). This wide range of wire gauge choices ensures that users can select the appropriate configuration to meet their specific requirements, making it a versatile solution for various connectivity needs in the railway and transportation sector.

In conclusion, the 7/8" Connector is a reliable, durable, and versatile connector that is well-suited for railway and transportation applications. With its high mating cycles, excellent insulation resistance, convenient coding system, flexible cable outlet options, and compatibility with different wire gauges, this Railway and Transportation Connector is a dependable choice for quick-connect industrial connectivity needs in the demanding environments of the railway and transportation industry.

Features:

Product Name: 7/8" Connector

Degree Of Protection: IP67

Contact Carrier Material: PA, Black

Ambient temperature: -25~+85

Seal Material: FPM/FKM

Wire color: 1=BK 2=BU 3=GN/YE 4=BN 5=WH

KRONZ





Technical Parameters:

Description	7/8" Cable Connector
Application	Industrial Automation
Shielded	No
Coding	A
Usage	For Power Applications
Wire Gauge	5×0.15 (5×16AWG)
Pin	5 Pin
Wire color	1=BK 2=BU 3=GN/YE 4=BN 5=WH
Voltage	600V
Seal Material	FPM/FKM

Applications:

KRONZ 7/8" Connector is a versatile circular connector that can be used in a variety of applications across different industries. With its high-quality materials and reliable performance, this connector is suitable for a wide range of product application occasions and scenarios.

Wind Energy Connector: The KRONZ 7/8" Connector is ideal for use in wind energy applications, where it can be used to connect and secure electrical components in wind turbines. Its durable housing material made of TPU in black color ensures protection against harsh environmental conditions, making it a reliable choice for wind energy projects.

Railway Connector: This connector is well-suited for railway and transportation applications, where it can be used to establish secure connections between different systems and components. Its brass contact nut material with nickel plating ensures excellent conductivity and long-lasting performance, making it a reliable choice for railway projects.

Product Application Occasions and Scenarios: The KRONZ 7/8" Connector can be used in various occasions and scenarios, such as industrial automation, robotics, medical devices, and more. Its PVC cable material in black color provides flexibility and durability, making it suitable for a wide range of applications.

Minimum Order Quantity: The minimum order quantity for the KRONZ 7/8" Connector is 5 pieces, allowing for easy procurement and stocking for different projects and applications.

Delivery Time: With a delivery time of 5-8 working days, customers can expect prompt delivery of the connectors to meet project deadlines and requirements.

Payment Terms: The KRONZ 7/8" Connector accepts payment terms including T/T, Western Union, and MoneyGram, providing flexibility and convenience for customers to complete their transactions.

Supply Ability: With a supply ability of 100,000 pieces per month, customers can rely on the availability of the connectors to support their ongoing and future projects.

Certification: The KRONZ 7/8" Connector is CE certified, ensuring compliance with quality and safety standards for reliable performance in various applications.

Packaging Details: The connectors are packed in polybags, providing protection during storage and transportation to prevent damage and ensure product quality.

Price: The price of the KRONZ 7/8" Connector is negotiable, allowing customers to discuss and agree on competitive pricing based on their specific requirements and order quantities.

Mating Cycles: With a mating cycle of over 100, the connector offers durability and long-lasting performance for repeated connections and disconnections in various applications.

Shielded: The KRONZ 7/8" Connector is not shielded, making it suitable for applications where shielding is not required but reliable connectivity is essential.

Overall, the KRONZ 7/8" Connector is a reliable and versatile circular connector that can be used in a wide range of product application occasions and scenarios, including wind energy, railway, transportation, and more. With its high-quality materials, certifications, and convenient payment and delivery terms, this connector is a valuable choice for various projects and applications.

ABOUT US

KRONZ is a manufacturing enterprise located in Zengcheng District, Guangzhou City. We focus on providing customers with high-efficiency industrial automation solutions and related industrial products. After many years of innovation and development, KRONZ has complete product processing equipment and a professional team who are proficient in various automation technologies.

In order to improve the quality of products and production efficiency, we continue to introduce advanced production equipment and technology, strengthen investment in research and development. At present, our main products include Industrial Connectors, Inductive Sensors, Capacitive Sensors, Photoelectric Sensors, Ultrasonic Sensors, Industrial power supplies, Industrial fieldbus, RFID recognition systems, Industrial Ethernet Switches

We not only produce the orders of standard products, but also have ability to make customize production based on customer design drawings or samples.

Adhering to the principle of mutual benefit, we provide our customers with competitive prices, and perfect after-sales service. KRONZ's products have been sold in multiple countries, have won the trust and praise of customers. KRONZ expect to collaborate with you.

OUR FACTORY

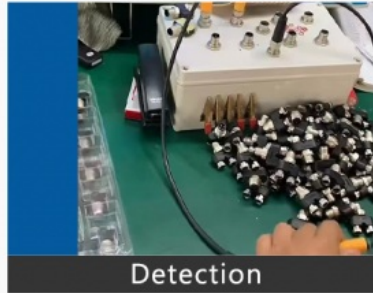


PRODUCTION PROCESS

Kronz (Guangzhou) Electronics Co., Ltd.



Raw material



Detection



Weld



Injection molding



Winding



Package

Support and Services:

The Product Technical Support and Services for the 7/8" Connector product include:

- Troubleshooting assistance for any connectivity issues
- Guidance on proper installation and usage
- Product warranty information and support
- Recommendations for maintenance and care of the connector

Packing and Shipping:

Product Name: 7/8" Connector

Description: High-quality connector for various electronic devices.

Package Includes: 1 x 7/8" Connector

Dimensions: 3" x 3" x 2"

Weight: 0.1 lbs

Shipping Method: Standard Shipping

Certifications



Logistics and Payment



1. Samples and small orders can be shipped with fast shipment method, by air and by express. Bulk order will ship by sea, by air, by train, by truck etc.
2. We also can send the goods to your agent warehouse.
3. If you need any more shipping method, please feel free to contact with us.



Note:

Due to the wide range of our products, we cannot list all product pictures and corresponding product parameters. If you have other needs, please communicate with me. We can provide supplementary information and technical support. We Are Happy to Serve You.



KRONZ Kronz (guangzhou) Electronics Co., Ltd.



+8618924160375



sales02@kronz.cn



connector-industrial.com

6th Floor, B602 Building, No.10, Rong Jing 2nd Road, Yu Shan Guo Ji, Yong Ning Street, Zeng Cheng District, Guangzhou, P.R.China

