



M12 Circular Connector IEC 61076-2-101 Contact Resistance $\leq 5\text{m}\Omega$ For Optimal Performance

Our Product Introduction

Basic Information

- Place of Origin: Guangdong, China
- Brand Name: KRONZ
- Certification: CE
- Model Number: H1205MA-9/L
- Minimum Order Quantity: 5
- Price: Negotiable
- Packaging Details: Polybag packing
- Delivery Time: 5-8 working days
- Payment Terms: T/T, Western Union, MoneyGram
- Supply Ability: 100000 pieces per month

KRONZ



Product Specification

- Seal Material: FPM/FKM
- Cable Outlet Diameter: 4-8mm
- Degree Of Protection: IP67
- Contact Nut Material: Brass, Nickle-plated
- Contact Resistance: $\leq 5\text{m}\Omega$
- Insulation Resistance: $\geq 100\text{M}\Omega$
- Rated Current: 4A
- Coding: A
- Highlight: M12 Circular Connector IEC 61076-2-101, M12 Circular Connector

KRONZ



More Images

KRONZ



Product Description

Product Description:

The M12 Cable Connector is a versatile and reliable solution for connecting electrical cables in various industrial applications. With a wide operating temperature range of -25~+85 , this connector is designed to withstand harsh environmental conditions, making it suitable for use in both indoor and outdoor settings.

One of the key features of the M12 Cable Connector is its high durability, with a mating cycle of over 100. This ensures a long service life and reliable performance, reducing the need for frequent replacements and maintenance.

The M12 Cable Connector is a Straight Cable Connector, providing a secure and stable connection between cables. Its M12 Male Connector design offers a simple and efficient way to establish connections, saving time and effort during installation and maintenance. This connector is coded as A, following the industry-standard coding system for easy identification and compatibility with other devices. It complies with the IEC 61076-2-101 standard, ensuring quality and reliability in its design and performance.

Constructed with high-quality materials, the contact nut of the M12 Cable Connector is made of brass and nickel-plated for enhanced durability and conductivity. These materials provide excellent corrosion resistance and electrical properties, ensuring a stable and efficient connection for your electrical systems.

Features:

M12 Circular Connector

Assembly connector

M12 Female Connector

Rated current: 4A

Seal material: FPM/FKM

Voltage: 60V

Contact resistance: $\leq 5\text{m}\Omega$

Pollution degree: 3

KRONZ



KRONZ



KRONZ



Technical Parameters:

Pin	5
Ambient temperature	-25~+85

Pollution degree	3
Mating cycles	>100
Standard	IEC 61076-2-101
Rated current	4A
Coding	A
Voltage	60V
Degree of protection	IP67
Insulation resistance	≥100MΩ

Applications:

KRONZ M12 Sensor Connector is a versatile and reliable connector solution suitable for a wide range of applications. With its high-quality materials and robust construction, this connector is ideal for use in demanding environments where a secure and durable connection is essential.

One of the key application occasions for the KRONZ M12 Sensor Connector is in industrial automation systems. The connector's screw connect feature ensures a stable and secure connection, making it perfect for use in machinery and equipment that require precise and consistent data transmission. The IP67 degree of protection also ensures reliable performance even in harsh industrial environments. Another common scenario for the M12 Sensor Connector is in the field of sensor technology. The 3-pin design of the connector allows for easy and efficient connection of sensors, making it an ideal choice for sensor applications in various industries. Whether it is used in manufacturing, automotive, or robotics, the M12 Female Connector provides a reliable and durable connection for sensors. Thanks to its high-quality seal material (FPM/FKM) and contact carrier material (PA, Black), the KRONZ M12 Sensor Connector offers excellent resistance to environmental factors such as temperature fluctuations. With an ambient temperature range of -25~+85 , this connector can perform reliably in a wide range of operating conditions.

Imported from Guangdong, China, the KRONZ M12 Sensor Connector is CE certified, ensuring compliance with international quality and safety standards. The packaging details include polybag packing, making it convenient for transportation and storage. The connector is available for a minimum order quantity of 5 pieces, with a negotiable price and delivery time of 5-8 working days.

For payment, customers can choose from T/T, Western Union, or MoneyGram, providing flexibility and convenience. With a supply ability of 100,000 pieces per month, the KRONZ M12 Sensor Connector is readily available to meet the needs of various industries and applications.

ABOUT US

KRONZ is a manufacturing enterprise located in Zengcheng District, Guangzhou City. We focus on providing customers with high-efficiency industrial automation solutions and related industrial products. After many years of innovation and development, KRONZ has complete product processing equipment and a professional team who are proficient in various automation technologies.

In order to improve the quality of products and production efficiency, we continue to introduce advanced production equipment and technology, strengthen investment in research and development. At present, our main products include Industrial Connectors, Inductive Sensors, Capacitive Sensors, Photoelectric Sensors, Ultrasonic Sensors, Industrial power supplies, Industrial fieldbus, RFID recognition systems, Industrial Ethernet Switches

We not only produce the orders of standard products, but also have ability to make customize production based on customer design drawings or samples.

Adhering to the principle of mutual benefit, we provide our customers with competitive prices , and perfect after-sales service. Kronz's products have been sold in multiple countries, have won the trust and praise of customers. KRONZ expect to collaborate with you.

OUR FACTORY

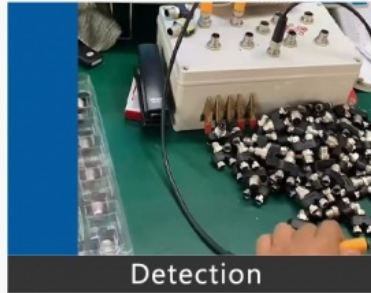


PRODUCTION PROCESS

Kronz (Guangzhou) Electronics Co., Ltd.



Raw material



Detection



Weld



Injection molding



Winding



Package

Support and Services:

The M12 Connector product offers comprehensive Product Technical Support and Services to ensure optimal performance and reliability. Our team of experts is available to assist with any technical inquiries, troubleshooting, and guidance to help you make the most of your M12 Connector. Whether you need assistance with installation, configuration, or maintenance, our technical support services are designed to meet your needs and ensure a seamless experience.

Certifications

Packing and Shipping:

Product Packaging for M12 Connector: -----

The M12 Connector is packaged in a durable cardboard box to ensure safe transportation and delivery. The product is securely placed in the box with protective padding to prevent any damage during shipping.

Shipping Information:

Once your order is confirmed, the M12 Connector will be carefully packed and shipped within 1-2 business days. We offer standard shipping options as well as expedited shipping for faster delivery. You will receive a tracking number to monitor the status of your shipment.

Product Packaging for M12 Connector:

The M12 Connector is packaged in a durable cardboard box to ensure safe transportation and delivery. The product is securely placed in the box with protective padding to prevent any damage during shipping.

Shipping Information:

Once your order is confirmed, the M12 Connector will be carefully packed and shipped within 1-2 business days. We offer standard shipping options as well as expedited shipping for faster delivery. You will receive a tracking number to monitor the status of your shipment.

Logistics and Payment



1. Samples and small orders can be shipped with fast shipment method, by air and by express. Bulk order will ship by sea, by air, by train, by truck etc.
2. We also can send the goods to your agent warehouse.
3. If you need any more shipping method, please feel free to contact with us.



Note:

Due to the wide range of our products, we cannot list all product pictures and corresponding product parameters. If you have other needs, please communicate with me. We can provide supplementary information and technical support. We Are Happy to Serve You.



KRONZ Kronz (guangzhou) Electronics Co., Ltd.



+8618924160375



sales02@kronz.cn



connector-industrial.com

6th Floor, B602 Building, No.10, Rong Jing 2nd Road, Yu Shan Guo Ji, Yong Ning Street, Zeng Cheng District, Guangzhou, P.R.China

