



Screw Connect M12 Connector Male 4 Pin For Heavy Duty Applications Rated Current 4A

Our Product Introduction

For more products please visit us on connector-industrial.com

Basic Information

- Place of Origin: Guangdong, China
- Brand Name: KRONZ
- Certification: CE
- Model Number: H1204MA-9/L
- Minimum Order Quantity: 5
- Price: Negotiable
- Packaging Details: Polybag packing
- Delivery Time: 5-8 working days
- Payment Terms: T/T, Western Union, MoneyGram
- Supply Ability: 100000 pieces per month

KRONZ

Product Specification

- Voltage: 250V
- Seal Material: FPM/FKM
- Housing Material: TPU, Black
- Coding: A
- Connect: Screw Connect
- Contact Nut Material: Alloy, Brass
- Rated Current: 4A
- Contact Resistance: $\leq 5\text{m}\Omega$
- Highlight: Heavy Duty Applications M12 Connector,
4 Pin M12 Connector,
Screw Connect M12 Connector

KRONZ

More Images

KRONZ

Product Description

Product Description:

A Pre-molded Cable Connector equipped with an M12 Male Connector is a versatile solution designed for secure and reliable connections in various applications. This particular connector features a Screw Connect mechanism, ensuring a sturdy and robust attachment that minimizes the risk of disconnection during operation.

With an Insulation resistance of $\geq 100\text{M}\Omega$, this M12 Connector provides excellent electrical insulation, safeguarding the integrity of the connection and preventing any unwanted electrical leakage. This high level of insulation resistance contributes to the safety and reliability of the overall system where the connector is utilized.

The Cable outlet of this M12 Connector is angled, offering flexibility in installation and allowing for efficient cable routing in confined spaces or applications that require a specific cable orientation. The angled design helps in minimizing cable strain and preventing damage, enhancing the longevity of the connector and the connected cables.

Rated for Pollution degree 3, this Pre-molded Cable Connector is suitable for use in environments where moderate levels of pollution may be present. The connector's robust construction and design protect against dust, debris, and other contaminants, ensuring consistent performance even in less-than-ideal environmental conditions.

Operating at a voltage of 250V/60V/30V, this M12 Connector is suitable for a wide range of voltage requirements, offering compatibility with various systems and equipment. The versatility in voltage ratings makes this connector a versatile choice for different applications where different voltage levels are involved.

Features:

M12 Straight Cable Connector

Connector M12

M12 Female Connector

Product Name: M12 Connector

Pin: 4

Voltage: 250V

Seal material: FPM/FKM

Contact carrier material: PA, Black

Degree of protection: IP67

KRONZ



KRONZ



KRONZ



Technical Parameters:

Pin	4
Voltage	250V

Insulation resistance	≥100MΩ
Contact nut material	Brass, Nickle-plated
Cable Outlet Diameter	4-8mm
Contact carrier material	PA, Black
Pollution degree	3
Contact surface material	Brass, Gold-plated
Standard	IEC 61076-2-101
Rated current	4A

Applications:

KRONZ M12 Connector is a versatile product that can be used in a wide range of assembly connector applications. With its high-quality design and reliable performance, this connector is suitable for various scenarios across different industries.

Product Application Occasions and Scenarios:

1. Industrial Automation: The KRONZ M12 Connector is perfect for use in industrial automation systems where reliable and secure connections are essential. Its A code connector ensures a safe and stable connection, making it ideal for use in factories, production lines, and machinery.
2. Robotics: This connector is well-suited for robotics applications due to its durable construction and high vibration resistance. It can be used to connect various components in robotic systems, ensuring smooth operation and minimal downtime.
3. Automotive Industry: The KRONZ M12 Connector is commonly used in the automotive industry for connecting sensors, actuators, and other electronic components. Its compact size and reliable performance make it a preferred choice for automotive applications.
4. Outdoor Applications: With an ambient temperature range of -25~+85 , this connector is suitable for outdoor use in harsh environments. It can withstand extreme temperatures and provide stable connections in outdoor equipment such as outdoor lighting, surveillance cameras, and outdoor displays.
5. Renewable Energy: The KRONZ M12 Connector is also ideal for use in renewable energy systems such as solar panels and wind turbines. Its high insulation resistance of ≥100MΩ ensures safe and reliable connections in these critical applications.

Whether you need to connect sensors in a factory or components in a robotic system, the KRONZ M12 Connector is a reliable choice. With its CE certification, high-quality materials, and compliance with the IEC 61076-2-101 standard, this connector offers a secure and efficient solution for various assembly connector needs.

ABOUT US

KRONZ is a manufacturing enterprise located in Zengcheng District, Guangzhou City. We focus on providing customers with high-efficiency industrial automation solutions and related industrial products. After many years of innovation and development, KRONZ has complete product processing equipment and a professional team who are proficient in various automation technologies.

In order to improve the quality of products and production efficiency, we continue to introduce advanced production equipment and technology, strengthen investment in research and development. At present, our main products include Industrial Connectors, Inductive Sensors, Capacitive Sensors, Photoelectric Sensors, Ultrasonic Sensors, Industrial power supplies, Industrial fieldbus, RFID recognition systems, Industrial Ethernet Switches

We not only produce the orders of standard products, but also have ability to make customize production based on customer design drawings or samples.

Adhering to the principle of mutual benefit, we provide our customers with competitive prices , and perfect after-sales service. Kronz's products have been sold in multiple countries, have won the trust and praise of customers. KRONZ expect to collaborate with you.

OUR FACTORY

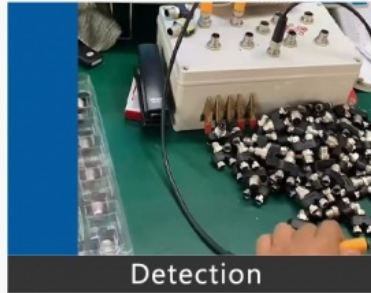


PRODUCTION PROCESS

Kronz (Guangzhou) Electronics Co., Ltd.



Raw material



Detection



Weld



Injection molding



Winding



Package

Support and Services:

The M12 Connector product offers comprehensive Product Technical Support and Services to assist customers with any inquiries or issues they may encounter. Our dedicated support team is available to provide guidance on product installation, troubleshooting, and maintenance.

Our services include product documentation, online resources, and technical experts who can help identify solutions to meet your specific needs. We are committed to ensuring that you have a positive experience with our M12 Connector product and are here to support you every step of the way.

Certifications



Packing and Shipping:

Product Name: M12 Connector

Description: High-quality M12 connector for industrial use.

Package Contents: 1 M12 Connector

Features: Waterproof, durable construction, easy to install.

Shipping Information: This product will be securely packaged and shipped within 1-2 business days after order confirmation.

Logistics and Payment



1. Samples and small orders can be shipped with fast shipment method, by air and by express. Bulk order will ship by sea, by air, by train, by truck etc.
2. We also can send the goods to your agent warehouse.
3. If you need any more shipping method, please feel free to contact with us.



Note:

Due to the wide range of our products, we cannot list all product pictures and corresponding product parameters. If you have other needs, please communicate with me. We can provide supplementary information and technical support. We Are Happy to Serve You.



KRONZ Kronz (guangzhou) Electronics Co., Ltd.



+8618924160375



sales02@kronz.cn



connector-industrial.com

6th Floor, B602 Building, No.10, Rong Jing 2nd Road, Yu Shan Guo Ji, Yong Ning Street, Zeng Cheng District, Guangzhou, P.R.China

