



## Insulation Resistance $\geq 100M\Omega$ M12 Connector IP67 Protection for Heavy-Duty Applications

Our Product Introduction

For more products please visit us on [connector-industrial.com](http://connector-industrial.com)

### Basic Information

- Place of Origin: Guangdong, China
- Brand Name: KRONZ
- Certification: CE
- Model Number: H1204MA-9/L
- Minimum Order Quantity: 5
- Price: Negotiable
- Packaging Details: Polybag packing
- Delivery Time: 5-8 working days
- Payment Terms: T/T, Western Union, MoneyGram
- Supply Ability: 100000 pieces per month

KRONZ



### Product Specification

- Contact Nut Material: Alloy, Brass
- Insulation Resistance:  $\geq 100M\Omega$
- Contact Surface Material: Brass, Gold-plated
- Seal Material: FPM/FKM
- Mating Cycles:  $>100$
- Cable Outlet Diameter: 4-8mm
- Cable Outlet: Angle
- Coding: A
- Highlight: Heavy Duty M12 Connector,  
 $100M\Omega$  M12 Connector,  
IP67 Protection M12 Connector

KRONZ



### More Images

KRONZ



## Product Description

### Product Description:

The M12 Circular Connector is a versatile and reliable product designed for a wide range of applications. With an ambient temperature range of  $-25^{\circ}\text{C}$  to  $+85^{\circ}\text{C}$ , this connector is suitable for use in various environments and conditions, providing consistent performance and durability.

One of the key features of the M12 Circular Connector is its low contact resistance of  $\leq 5\text{m}\Omega$ . This ensures efficient power transmission and signal integrity, making it ideal for demanding industrial and commercial applications where reliable connectivity is crucial.

The contact surface material of the M12 Circular Connector is made of high-quality brass that is gold-plated. This combination of materials enhances conductivity and corrosion resistance, ensuring long-term reliability and consistent performance even in harsh operating conditions.

Furthermore, the M12 Circular Connector boasts excellent insulation resistance of  $\geq 100\text{M}\Omega$ . This high level of insulation ensures electrical safety and prevents signal interference, making it a dependable choice for critical connections in a variety of industries.

Designed for ease of installation and use, the M12 Circular Connector features a screw connect mechanism. This allows for secure and stable connections, reducing the risk of disconnection and ensuring reliable performance over time.

Whether used as a pre-molded cable connector or as part of an assembly connector, the M12 Circular Connector offers a reliable and efficient solution for various connectivity needs. Its robust construction, high-quality materials, and excellent performance make it a trusted choice for professionals in diverse industries.

Overall, the M12 Circular Connector is a high-quality product that combines durability, versatility, and performance. With its wide temperature range, low contact resistance, superior materials, and reliable screw connect mechanism, this connector is an excellent choice for demanding applications where secure and efficient connectivity is essential.

### Features:

M12 Straight Connector

M12 Connector

Connectors

Product Name: M12 Connector

Housing material: TPU, Black

Seal material: FPM/FKM

Voltage: 250V

Mating cycles:  $>100$

Insulation resistance:  $\geq 100\text{M}\Omega$

# KRONZ



KRONZ



KRONZ



**Technical Parameters:**

Housing material	TPU; Black
Insulation resistance	$\geq 100\text{M}\Omega$

Coding	A
Mating cycles	>100
Pin	4
Rated current	4A/2A
Voltage	250V
Degree of protection	IP67
Pollution degree	3
Seal material	FPM/FKM

## Applications:

KRONZ M12 Angled Cable Connector is a versatile and reliable product suitable for a wide range of applications and scenarios. With its high-quality construction and excellent performance, this M12 Connector is the perfect choice for various industrial and commercial needs.

Product Application Occasions and Scenarios:

- Industrial Automation: The M12 Angled Cable Connector from KRONZ is ideal for use in industrial automation systems, providing a secure and stable connection for sensors, actuators, and other equipment. Its A code connector design ensures compatibility and reliability in demanding industrial environments.
- Machinery Manufacturing: This M12 Connector is widely used in machinery manufacturing for connecting different components and devices. The Angled Cable Connector design allows for easy installation in tight spaces, making it a convenient solution for various machinery applications.
- Automotive Industry: With its durable construction and high temperature resistance, the KRONZ M12 Angled Cable Connector is a preferred choice for the automotive industry. It can be used for connecting sensors, lighting systems, and other electronic components in vehicles, ensuring reliable performance in challenging conditions.
- Robotics: The M12 Connector is also well-suited for robotics applications, providing a secure and stable connection for various sensors and actuators in robotic systems. Its compact design and reliable performance make it an essential component in modern robotic technologies.

With its CE certification and high-quality standards, the KRONZ M12 Angled Cable Connector guarantees safety and reliability in all applications. The minimum order quantity of 5 units makes it easy to procure for both small-scale and large-scale projects. The negotiable price, flexible payment terms, and fast delivery time of 5-8 working days ensure a seamless purchasing experience.

Whether you need a reliable connector for industrial automation, machinery manufacturing, automotive applications, or robotics, the KRONZ M12 Angled Cable Connector is the perfect choice. Its durable construction, wide compatibility, and excellent performance make it a valuable asset in a variety of scenarios.

## ABOUT US

KRONZ is a manufacturing enterprise located in Zengcheng District, Guangzhou City. We focus on providing customers with high-efficiency industrial automation solutions and related industrial products. After many years of innovation and development, KRONZ has complete product processing equipment and a professional team who are proficient in various automation technologies.

In order to improve the quality of products and production efficiency, we continue to introduce advanced production equipment and technology, strengthen investment in research and development. At present, our main products include Industrial Connectors, Inductive Sensors, Capacitive Sensors, Photoelectric Sensors, Ultrasonic Sensors, Industrial power supplies, Industrial fieldbus, RFID recognition systems, Industrial Ethernet Switches

We not only produce the orders of standard products, but also have ability to make customize production based on customer design drawings or samples.

Adhering to the principle of mutual benefit, we provide our customers with competitive prices, and perfect after-sales service. KRONZ's products have been sold in multiple countries, have won the trust and praise of customers. KRONZ expect to collaborate with you.

## OUR FACTORY

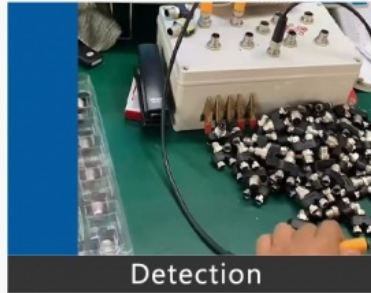


# PRODUCTION PROCESS

Kronz (Guangzhou) Electronics Co., Ltd.



Raw material



Detection



Weld



Injection molding



Winding



Package

## Support and Services:

The M12 Connector product offers comprehensive Product Technical Support and Services to assist customers with any queries or issues they may encounter. Our team of dedicated technical support specialists is available to provide guidance on product installation, troubleshooting, and maintenance. Additionally, we offer services such as product training, customization, and warranty support to ensure that our customers have a seamless experience with our M12 Connector product.



# Certifications



## Packing and Shipping:

Product: M12 Connector

Description: High-quality M12 connector for industrial use

Package Contents:

- 1 M12 Connector
- Instruction Manual

Shipping Information:

- Shipping Method: Standard Shipping
- Estimated Delivery Time: 5-7 business days

# Logistics and Payment



1. Samples and small orders can be shipped with fast shipment method, by air and by express. Bulk order will ship by sea, by air, by train, by truck etc.
2. We also can send the goods to your agent warehouse.
3. If you need any more shipping method, please feel free to contact with us.



## Note:

Due to the wide range of our products, we cannot list all product pictures and corresponding product parameters. If you have other needs, please communicate with me. We can provide supplementary information and technical support. We Are Happy to Serve You.



**KRONZ** Kronz (guangzhou) Electronics Co., Ltd.



+8618924160375



sales02@kronz.cn



connector-industrial.com

6th Floor, B602 Building, No.10, Rong Jing 2nd Road, Yu Shan Guo Ji, Yong Ning Street, Zeng Cheng District, Guangzhou, P.R.China

