



## M12 Circular Connector Angle Field-wirable Connectors 4 Pin Rated Current 4A/2A

Our Product Introduction

For more products please visit us on [connector-industrial.com](http://connector-industrial.com)

### Basic Information

- Place of Origin: Guangdong, China
- Brand Name: KRONZ
- Certification: CE
- Model Number: H1204FA-9/L
- Minimum Order Quantity: 5
- Price: Negotiable
- Packaging Details: Polybag packing
- Delivery Time: 5-8 working days
- Payment Terms: T/T, Western Union, MoneyGram
- Supply Ability: 100000 pieces per month

KRONZ



### Product Specification

- Cable Outlet: Angle
- Voltage: 250V
- Contact Carrier Material: ABS, PA, Black
- Contact Resistance:  $\leq 5\text{m}\Omega$
- Mating Cycles:  $> 100$
- Degree Of Protection: IP67
- Contact Nut Material: Brass, Alloy
- Connect: Screw Connection
- Highlight: **M12 Circular Connector Angle,  
4 Pin M12 Circular Connector,  
Field wirable M12 Circular Connector**

KRONZ



### More Images

KRONZ



## Product Description

### Product Description:

The M12 Connector is a versatile and reliable solution for various industrial applications, known for its durability and high performance. This Waterproof Connector is designed with a seal material made of NBR, ensuring excellent protection against moisture and environmental factors.

With a superior design that allows for more than 100 mating cycles, the M12 Connector proves to be a long-lasting and cost-effective choice for your connectivity needs. Its robust construction and adherence to the IEC 61076-2-101 standard guarantee compatibility and quality.

The Rated current of the M12 Connector is 4A, providing sufficient power for your devices while maintaining efficiency and safety. Additionally, the Insulation resistance of  $\geq 100\text{M}\Omega$  ensures reliable and stable electrical connections, crucial for maintaining operational integrity.

Whether you require a Pre-assembled Cable Connector or need a customizable solution for your specific requirements, the M12 Connector offers flexibility and ease of use. Its compact size and user-friendly design make installation and maintenance hassle-free, ideal for various industrial and commercial settings.

Engineered for performance and reliability, the M12 Connector is a trusted choice for professionals seeking a dependable and efficient solution for their connectivity needs. With a focus on quality and durability, this Waterproof Connector excels in demanding environments, providing peace of mind and consistent performance.

### Features:

M12 Circular Connector

M12 Female Connector

M12 Field-wirable Connector

Product Name: M12 Connector

Insulation resistance:  $\geq 100\text{M}\Omega$

Rated current: 4A

Housing material: TPU, Black

Contact surface material: Brass, Gold-plated

Pin: 4

# KRONZ



**KRONZ**



**KRONZ**



**Technical Parameters:**

Pollution degree	3
Degree of protection	IP67

Standard	IEC 61076-2-101
Clamp matrix material	ABS, PBT/PA, Black
Housing material	TPU, Black
Contact surface material	Brass, Gold-plated
Contact nut material	Brass, Alloy
Rated current	4A
Connect	Screw Connection
Pin	4

## Applications:

KRONZ M12 connectors are versatile and reliable solutions suitable for various application occasions and scenarios. With their superior quality and performance, these connectors can be used in a wide range of industries and settings.

One of the key application scenarios for the M12 Plug Connector is in industrial automation. These connectors are ideal for connecting sensors, actuators, and other devices in automated systems. The M12 Straight Cable Connector is a perfect choice for ensuring secure and efficient connections in industrial machinery and equipment.

Another important application occasion for the KRONZ M12 connectors is in the field of transportation. These connectors are commonly used in vehicle electronics, such as in automotive applications, where reliable and waterproof connectors are essential. The waterproof feature of the connectors makes them suitable for outdoor and harsh environments.

Thanks to their robust design and waterproof properties, the KRONZ M12 connectors are also well-suited for use in outdoor installations, such as outdoor lighting systems, security cameras, and outdoor signage. The durable construction of the connectors ensures reliable performance even in challenging weather conditions.

Whether it's for industrial automation, transportation, outdoor installations, or other applications, the KRONZ M12 connectors provide a dependable and secure connection solution. With their CE certification and high-quality materials such as brass and alloy, these connectors offer excellent contact resistance and durability, making them a reliable choice for various industries.

With a minimum order quantity of 5 pieces and flexible payment terms including T/T, Western Union, and MoneyGram, acquiring the KRONZ M12 connectors is convenient and cost-effective. The packaging details in polybag packing ensure safe delivery, and with a delivery time of 5-8 working days, customers can quickly receive their orders.

Overall, the KRONZ M12 connectors offer a high supply ability of 100,000 pieces per month, making them readily available for different application occasions and scenarios. With a rated current of 4A/2A and a pollution degree of 3, these connectors are designed to meet the demands of various industries, providing reliable and secure connections in diverse settings.

## ABOUT US

KRONZ is a manufacturing enterprise located in Zengcheng District, Guangzhou City. We focus on providing customers with high-efficiency industrial automation solutions and related industrial products. After many years of innovation and development, KRONZ has complete product processing equipment and a professional team who are proficient in various automation technologies.

In order to improve the quality of products and production efficiency, we continue to introduce advanced production equipment and technology, strengthen investment in research and development. At present, our main products include Industrial Connectors, Inductive Sensors, Capacitive Sensors, Photoelectric Sensors, Ultrasonic Sensors, Industrial power supplies, Industrial fieldbus, RFID recognition systems, Industrial Ethernet Switches

We not only produce the orders of standard products, but also have ability to make customize production based on customer design drawings or samples.

Adhering to the principle of mutual benefit, we provide our customers with competitive prices, and perfect after-sales service. KRONZ's products have been sold in multiple countries, have won the trust and praise of customers. KRONZ expect to collaborate with you.

## OUR FACTORY

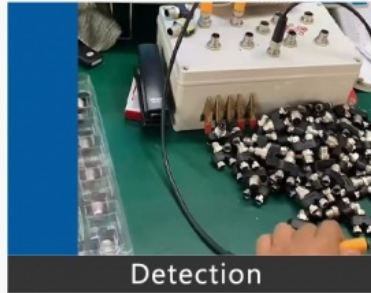


# PRODUCTION PROCESS

Kronz (Guangzhou) Electronics Co., Ltd.



Raw material



Detection



Weld



Injection molding



Winding



Package

## Support and Services:

The M12 Connector product comes with comprehensive Product Technical Support and Services to assist customers with any issues or inquiries they may have. Our dedicated technical support team is available to provide guidance on product installation, troubleshooting, and compatibility. Additionally, we offer repair and maintenance services to ensure the optimal performance and longevity of your M12 Connector product.



# Certifications



## Packing and Shipping:

Product Packaging for M12 Connector: -----

The M12 Connector is carefully packaged in a sturdy cardboard box to ensure safe delivery. The connector is placed in a protective foam insert to prevent any damage during transit.

Shipping Information:

We ship the M12 Connector using a reliable courier service to ensure timely and secure delivery. The package is sealed and labeled with the necessary shipping information for easy identification.

# Logistics and Payment



- 1. Samples and small orders can be shipped with fast shipment method, by air and by express. Bulk order will ship by sea, by air, by train, by truck etc.
- 2. We also can send the goods to your agent warehouse.
- 3. If you need any more shipping method, please feel free to contact with us.



**Note:**

Due to the wide range of our products, we cannot list all product pictures and corresponding product parameters. If you have other needs, please communicate with me. We can provide supplementary information and technical support. We Are Happy to Serve You.

 **CONTACT US**

**KRONZ** Kronz (guangzhou) Electronics Co., Ltd.

+8618924160375    sales02@kronz.cn    connector-industrial.com

6th Floor, B602 Building, No.10, Rong Jing 2nd Road, Yu Shan Guo Ji, Yong Ning Street, Zeng Cheng District,

