



M12 Sensor Connector 4 Pin Aviation Plug 250V Angled Circular Connectors Resistance $\leq 5\text{m}\Omega$

Our Product Introduction

For more products please visit us on connector-industrial.com

Basic Information

- Place of Origin: Guangdong, China
- Brand Name: KRONZ
- Certification: CE
- Model Number: H1204MA-9/L
- Minimum Order Quantity: 5
- Price: Negotiable
- Packaging Details: Polybag packing
- Delivery Time: 5-8 working days
- Payment Terms: T/T, Western Union, MoneyGram
- Supply Ability: 100000 pieces per month

KRONZ



Product Specification

- Gender: Male
- Rated Current: 4A
- Contact Resistance: $\leq 5\text{m}\Omega$
- Coding: A
- Ambient Temperature: $-25\sim+85$
- Cable Outlet Diameter: 4-8mm
- Pin: 4
- Clamp Matrix Material: ABS, PBT/PA, Black
- Highlight: **Angled Circular M12 Sensor Connector,
250V M12 Sensor Connector,
4 Pin M12 Sensor Connector**

KRONZ



More Images

KRONZ



Product Description

Product Description:

The M12 Straight Cable Connector is a versatile and reliable solution for your connectivity needs. This waterproof connector is designed with a contact carrier material made of ABS, PA, Black, ensuring durability and resistance to harsh environmental conditions. The cable outlet is angled, providing flexibility in installation and cable management.

With options for 4, 5, or 8 pins, the M12 Circular Connector offers excellent connectivity for various applications. The pins are designed to securely transmit signals and power, making it ideal for industrial and commercial use. The seal material, NBR, provides a tight and secure fit, protecting the connector from moisture and dust.

One of the key features of the M12 Connector is its high insulation resistance of $\geq 100\text{M}\Omega$. This ensures reliable and safe operation, even in challenging environments. Whether you need to connect sensors, actuators, or other devices, this connector provides a stable and secure connection.

Features:

Product Name: M12 Connector

Standard: IEC 61076-2-101

Rated current: 4A

Ambient temperature: $-25\sim+85$

Contact carrier material: ABS, PA, Black

Pollution degree: 3

KRONZ



KRONZ



KRONZ



Technical Parameters:

Degree of protection	IP67
Standard	IEC 61076-2-101
Clamp matrix material	ABS, PBT/PA, Black
Contact resistance	≤5mΩ

Housing material	TPU, Black
Mating cycles	>100
Contact nut material	Brass, Alloy
Rated current	4A
Seal material	NBR
Connect	Screw Connection

Applications:

KRONZ M12 Cable Connectors are versatile and reliable components suitable for a wide range of applications. With a brand name that signifies quality and innovation, these connectors are designed to meet the demanding requirements of various industries.

Originating from Guangdong, China, these M12 connectors boast a CE certification, ensuring compliance with international quality and safety standards. The minimum order quantity for these connectors is 5, making them accessible for both small-scale and large-scale projects. Additionally, the price is negotiable, providing flexibility for different budget considerations.

Packaged in polybags, these connectors are delivered within 5-8 working days, ensuring quick turnaround times for urgent projects.

Payment terms include T/T, Western Union, and MoneyGram, offering convenience and multiple options for financial transactions.

With a supply ability of 100,000 pieces per month, KRONZ M12 Cable Connectors are readily available to meet the demands of various industries and projects. The rated current of these connectors is 4A/2A, suitable for different power requirements.

Designed with an angle cable outlet and a cable outlet diameter of 4-8mm, these connectors offer flexibility in cable management and installation. They can withstand an ambient temperature range of -25~+85 , ensuring reliable performance in diverse environmental conditions.

With a voltage rating of 250V/60V/30V, these M12 Cable Connectors are ideal for use in applications where stable and secure electrical connections are essential. Whether in industrial settings, automotive applications, or machinery installations, these connectors provide a reliable solution for connecting various components.

Overall, KRONZ M12 Cable Connectors are versatile, durable, and high-performing components that cater to a wide range of product application occasions and scenarios. From industrial machinery to automation systems, these connectors offer a reliable and efficient solution for establishing secure electrical connections.

ABOUT US

KRONZ is a manufacturing enterprise located in Zengcheng District, Guangzhou City. We focus on providing customers with high-efficiency industrial automation solutions and related industrial products. After many years of innovation and development, KRONZ has complete product processing equipment and a professional team who are proficient in various automation technologies.

In order to improve the quality of products and production efficiency, we continue to introduce advanced production equipment and technology, strengthen investment in research and development. At present, our main products include Industrial Connectors, Inductive Sensors, Capacitive Sensors, Photoelectric Sensors, Ultrasonic Sensors, Industrial power supplies, Industrial fieldbus, RFID recognition systems, Industrial Ethernet Switches

We not only produce the orders of standard products, but also have ability to make customize production based on customer design drawings or samples.

Adhering to the principle of mutual benefit, we provide our customers with competitive prices , and perfect after-sales service. KRONZ's products have been sold in multiple countries, have won the trust and praise of customers. KRONZ expect to collaborate with you.

OUR FACTORY

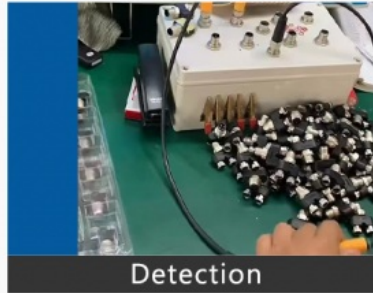


PRODUCTION PROCESS

Kronz (Guangzhou) Electronics Co., Ltd.



Raw material



Detection



Weld



Injection molding



Winding



Package

Support and Services:

The M12 Connector product comes with comprehensive technical support and services to ensure a seamless user experience. Our team of experts is available to assist with any product-related inquiries, troubleshooting, and guidance on installation and usage. Additionally, we offer maintenance services to help keep your M12 Connector in optimal condition for long-term performance.

Certifications



Packing and Shipping:

Product Packaging for M12 Connector: -----

The M12 Connector is securely packaged in a sturdy cardboard box to ensure safe delivery.

Shipping Information:

We offer fast and reliable shipping services for the M12 Connector product. Orders are typically processed and shipped within 1-2 business days.

Logistics and Payment



1. Samples and small orders can be shipped with fast shipment method, by air and by express. Bulk order will ship by sea, by air, by train, by truck etc.
2. We also can send the goods to your agent warehouse.
3. If you need any more shipping method, please feel free to contact with us.



Note:

Due to the wide range of our products, we cannot list all product pictures and corresponding product parameters. If you have other needs, please communicate with me. We can provide supplementary information and technical support. We Are Happy to Serve You.



KRONZ Kronz (guangzhou) Electronics Co., Ltd.



+8618924160375



sales02@kronz.cn



connector-industrial.com

6th Floor, B602 Building, No.10, Rong Jing 2nd Road, Yu Shan Guo Ji, Yong Ning Street, Zeng Cheng District, Guangzhou, P.R.China

