



M12 Female Connector Brass Contact Nut Material Aviation Plug 5 Pin Circular Connectors

Our Product Introduction

For more products please visit us on connector-industrial.com

Basic Information

- Place of Origin: Guangdong, China
- Brand Name: KRONZ
- Certification: CE
- Model Number: H1205MA-9/L
- Minimum Order Quantity: 5
- Price: Negotiable
- Packaging Details: Polybag packing
- Delivery Time: 5-8 working days
- Payment Terms: T/T, Western Union, MoneyGram
- Supply Ability: 100000 pieces per month

KRONZ

Product Specification

- Pin: 5
- Gender: Male
- Rated Current: 4A
- Insulation Resistance: $\geq 100M\Omega$
- Connect: Screw Connection
- Degree Of Protection: IP67
- Contact Nut Material: Brass, Alloy
- Mating Cycles: >100
- Highlight: Aviation Plug M12 Female Connector,
Brass Contact Nut M12 Female Connector,
5 Pin M12 Female Connector

KRONZ

More Images

KRONZ

Product Description

Product Description:

The M12 Sensor Connector is a versatile and reliable circular connector designed for various industrial applications. With a rated current of 4A/2A, this connector is capable of handling moderate to low power requirements with ease. The M12 Connector comes in pin configurations of 4, 5, and 8, providing flexibility to accommodate different connectivity needs.

One of the key features of the M12 Circular Connector is its angled cable outlet, which allows for convenient and space-saving installations in tight spaces or corners. This design feature enhances the overall usability and practicality of the connector, making it suitable for a wide range of environments.

When it comes to performance, the M12 Connector boasts an insulation resistance of $\geq 100\text{M}\Omega$, ensuring reliable and secure connections that meet industry standards for safety and efficiency. This high level of insulation resistance helps prevent electrical leakage and ensures stable signal transmission, making the connector ideal for sensitive electronic applications.

Additionally, the M12 Sensor Connector is equipped with coding type A, which helps prevent misconnection and ensures proper mating with compatible devices. This coding feature enhances the reliability and integrity of the connections, reducing the risk of errors or malfunctions.

In summary, the M12 Connector is a high-quality and versatile solution for various industrial connectivity needs. With its robust construction, multiple pin configurations, angled cable outlet, high insulation resistance, and coding type A, this connector offers a reliable and efficient connection solution for a wide range of applications.

Whether you are looking for a dependable connector for sensors, actuators, or other devices, the M12 Circular Connector is a reliable choice that delivers performance and durability in a compact and user-friendly design. Trust the M12 Connector to provide secure and stable connections in demanding industrial environments.

Features:

M12 Angled Cable Connector

M12 Cable Connector

Assembly connector

Degree of protection: IP67

Pollution degree: 3

Pin: 5

Clamp matrix material: ABS, PBT/PA, Black

Coding: A

KRONZ



KRONZ



KRONZ



Technical Parameters:

Contact Carrier Material	ABS, PA, Black
Cable Outlet Diameter	4-8mm
Ambient Temperature	-25~+85

Connect	Screw Connection
Contact Resistance	≤5mΩ
Insulation Resistance	≥100MΩ
Pollution Degree	3
Mating Cycles	>100
Seal Material	NBR
Cable Outlet	Angle

Applications:

KRONZ M12 Cable Connector is a versatile product suitable for a wide range of application occasions and scenarios. With its robust design and reliable performance, this M12 Connector is a popular choice for various industries. Let's explore some of the key product application occasions and scenarios:

Industrial Automation: The KRONZ M12 Connector is commonly used in industrial automation systems for connecting sensors, actuators, and other devices. Its rugged construction and high mating cycles make it ideal for harsh industrial environments.

Factory Automation: In factory automation settings, the M12 Cable Connector is essential for establishing secure connections between different equipment and machinery. The connector's gender being male makes it easy to install and use in various automation applications.

Fieldbus Systems: M12 Connectors are widely used in Fieldbus systems for reliable data transmission between devices. The KRONZ M12 Connector with 3 pin configuration ensures seamless communication in Fieldbus networks.

Robotics: M12 Connectors play a crucial role in robotics applications by enabling the connection of various components such as motors, sensors, and controllers. The KRONZ M12 Connector's CE certification guarantees high-quality performance in robotic systems.

Renewable Energy: With its high rated current capacity of 4A/2A, the M12 Cable Connector is well-suited for renewable energy systems such as solar panels and wind turbines. Its reliable contact carrier materials (ABS, PA, Black) ensure long-term durability in outdoor installations.

Whether you are looking to establish connections in industrial automation, factory automation, Fieldbus systems, robotics, or renewable energy applications, the KRONZ M12 Connector is a dependable choice. With a minimum order quantity of 5 pieces and negotiable pricing, it offers flexibility for both small and large-scale projects. The product is packaged securely in polybags and can be delivered within 5-8 working days from Guangdong, China.

Choose the KRONZ M12 Connector for your connectivity needs and experience seamless performance in various application scenarios. With a supply ability of 100,000 pieces per month, you can count on this reliable connector for your ongoing and future projects.

ABOUT US

KRONZ is a manufacturing enterprise located in Zengcheng District, Guangzhou City. We focus on providing customers with high-efficiency industrial automation solutions and related industrial products. After many years of innovation and development, KRONZ has complete product processing equipment and a professional team who are proficient in various automation technologies.

In order to improve the quality of products and production efficiency, we continue to introduce advanced production equipment and technology, strengthen investment in research and development. At present, our main products include Industrial Connectors, Inductive Sensors, Capacitive Sensors, Photoelectric Sensors, Ultrasonic Sensors, Industrial power supplies, Industrial fieldbus, RFID recognition systems, Industrial Ethernet Switches

We not only produce the orders of standard products, but also have ability to make customize production based on customer design drawings or samples.

Adhering to the principle of mutual benefit, we provide our customers with competitive prices, and perfect after-sales service. KRONZ's products have been sold in multiple countries, have won the trust and praise of customers. KRONZ expect to collaborate with you.

OUR FACTORY

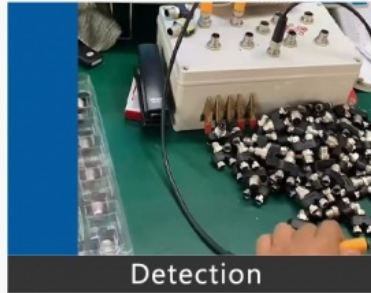


PRODUCTION PROCESS

Kronz (Guangzhou) Electronics Co., Ltd.



Raw material



Detection



Weld



Injection molding



Winding



Package

Support and Services:

The M12 Connector product offers comprehensive product technical support and services to ensure optimal performance and customer satisfaction. Our team of skilled technicians is dedicated to providing assistance with installation, troubleshooting, and maintenance of the M12 Connector. Additionally, we offer product training sessions to help users maximize the benefits of the M12 Connector technology. Rest assured that our technical support team is always available to address any inquiries and provide timely solutions for your needs.

Certifications



Packing and Shipping:

This high-quality M12 Connector is carefully packaged to ensure safe delivery to your location. The connector is enclosed in a sturdy box with protective cushioning to prevent any damage during shipping. For shipping, we partner with reliable carriers to promptly deliver your order. Your M12 Connector will be securely packed and sent with care to reach you in perfect condition.

Logistics and Payment



- 1. Samples and small orders can be shipped with fast shipment method, by air and by express. Bulk order will ship by sea, by air, by train, by truck etc.
- 2. We also can send the goods to your agent warehouse.
- 3. If you need any more shipping method, please feel free to contact with us.



Note:

Due to the wide range of our products, we cannot list all product pictures and corresponding product parameters. If you have other needs, please communicate with me. We can provide supplementary information and technical support. We Are Happy to Serve You.



KRONZ Kronz (guangzhou) Electronics Co., Ltd.

+8618924160375 sales02@kronz.cn connector-industrial.com

6th Floor, B602 Building, No.10, Rong Jing 2nd Road, Yu Shan Guo Ji, Yong Ning Street, Zeng Cheng District, Guangzhou, P.R.China

