



Screw Connect M12 Male Connector Cable Outlet Diameter 4-8mm Aviation Plug Socket Circular

Our Product Introduction

For more products please visit us on connector-industrial.com

Basic Information

- Place of Origin: Guangdong, China
- Brand Name: KRONZ
- Certification: CE
- Model Number: H1204MA-9/L
- Minimum Order Quantity: 5
- Price: Negotiable
- Packaging Details: Polybag packing
- Delivery Time: 5-8 working days
- Payment Terms: T/T, Western Union, MoneyGram
- Supply Ability: 100000 pieces per month

KRONZ



Product Specification

- Voltage: 250V/60V/30V
- Housing Material: TPU, Black
- Rated Current: 4A/2A
- Cable Outlet Diameter: 4-8mm
- Degree Of Protection: IP67
- Mating Cycles: >100
- Ambient Temperature: -25~+85
- Coding: A
- Highlight: M12 Male Connector Cable Outlet,
M12 Male Connector Cable Socket,
M12 Male Connector Cable

KRONZ



More Images

KRONZ



Product Description

Product Description:

The M12 Connector is a versatile and reliable solution that offers exceptional performance for various industrial applications. With a high degree of protection rated at IP67, this connector ensures reliable and secure connections even in challenging environments.

Designed for convenience and ease of use, the M12 Connector features a screw connection mechanism that allows for quick and secure installation. This makes it ideal for applications where frequent connections and disconnections are required, as well as for use in compact spaces where traditional connectors may be difficult to access.

The contact nut material of the M12 Connector is made of high-quality brass alloy, ensuring durability and long-lasting performance. This material combination provides excellent conductivity and resistance to corrosion, making the connector suitable for a wide range of industrial settings.

Available in various pin configurations including 4, 5, and 8 pins, the M12 Connector offers flexibility to meet different connectivity requirements. Whether you need a simple 4-pin connection or a more complex 8-pin configuration, this connector can accommodate your specific needs with ease.

With an ambient temperature range of -25°C to +85°C, the M12 Connector is designed to withstand extreme temperatures and harsh operating conditions. This makes it suitable for use in a wide range of industrial applications where temperature fluctuations are common. Whether you need an M12 Angled Cable Connector, a Pre-molded Cable Connector, or a standard M12 Connector, this product has you covered. Its robust construction, reliable performance, and versatile design make it an ideal choice for a wide range of industrial applications.

Features:

M12 Circular Connector

M12 Male Connector

Connectors

Cable Outlet Diameter: 4-8mm

Gender: Male

Pin: 4

Clamp matrix material: ABS, PBT/PA, Black

Mating cycles: >100

KRONZ



KRONZ



KRONZ



Technical Parameters:

Contact carrier material	ABS, PA, Black
Clamp matrix material	ABS, PBT/PA, Black
Connect	Screw Connection

Pin	4
Rated current	4A
Standard	IEC 61076-2-101
Pollution degree	3
Cable Outlet Diameter	4-8mm
Cable outlet	Angle
Seal material	NBR

Applications:

KRONZ M12 Connector is a versatile product that can be used in a wide range of applications due to its high-quality features and specifications. Here are some product application occasions and scenarios where the M12 Connector excels:

Industrial Machinery: The M12 Connector is perfect for use in industrial machinery where reliable and secure connections are essential. Its screw connection ensures a stable and durable connection, making it ideal for heavy-duty applications.

Factory Automation: With its CE certification and high mating cycles (>100), the KRONZ M12 Connector is well-suited for factory automation systems. It can withstand the demands of continuous use and harsh industrial environments.

Robotics: The M12 Connector is commonly used in robotics for its easy and secure connection capabilities. Whether it's connecting sensors, actuators, or other components, the M12 Connector provides a reliable solution.

Field Devices: The M12 Connector is widely used in field devices such as sensors, actuators, and switches. Its pollution degree of 3 ensures reliable performance even in dusty or dirty environments.

Outdoor Applications: Thanks to its voltage rating (250V/60V/30V) and robust construction, the KRONZ M12 Connector is suitable for outdoor applications where exposure to the elements is a concern. Its pre-molded cable connector design provides added protection against moisture and debris.

Whether you need connectors for industrial machinery, factory automation, robotics, field devices, or outdoor applications, the KRONZ M12 Connector is a reliable and high-performance choice. With a minimum order quantity of 5 pieces and a supply ability of 100,000 pieces per month, you can easily meet your connectivity needs. The M12 Connector comes in polybag packing for convenience and can be delivered in just 5-8 working days.

For pricing and payment terms, feel free to contact us as prices are negotiable, and we accept payment via T/T, Western Union, and MoneyGram. Upgrade your connectivity solutions with the KRONZ M12 Connector today!

ABOUT US

KRONZ is a manufacturing enterprise located in Zengcheng District, Guangzhou City. We focus on providing customers with high-efficiency industrial automation solutions and related industrial products. After many years of innovation and development, KRONZ has complete product processing equipment and a professional team who are proficient in various automation technologies.

In order to improve the quality of products and production efficiency, we continue to introduce advanced production equipment and technology, strengthen investment in research and development. At present, our main products include Industrial Connectors, Inductive Sensors, Capacitive Sensors, Photoelectric Sensors, Ultrasonic Sensors, Industrial power supplies, Industrial fieldbus, RFID recognition systems, Industrial Ethernet Switches

We not only produce the orders of standard products, but also have ability to make customize production based on customer design drawings or samples.

Adhering to the principle of mutual benefit, we provide our customers with competitive prices, and perfect after-sales service. KRONZ's products have been sold in multiple countries, have won the trust and praise of customers. KRONZ expect to collaborate with you.

OUR FACTORY

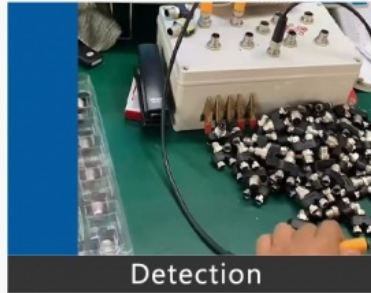


PRODUCTION PROCESS

Kronz (Guangzhou) Electronics Co., Ltd.



Raw material



Detection



Weld



Injection molding



Winding



Package

Support and Services:

The M12 Connector product offers comprehensive Product Technical Support and Services to assist customers with any issues or inquiries they may have. Our dedicated team of experts is available to provide guidance on installation, troubleshooting, and optimization of the M12 Connector to ensure maximum performance and reliability.

Certifications



Packing and Shipping:

This M12 Connector is packaged in a sturdy cardboard box to ensure safe transport and delivery. Each connector is carefully wrapped in protective bubble wrap to prevent any damage during shipping. For shipping, we use reliable carriers to deliver your order promptly. Your M12 Connector will be securely packed to prevent any mishandling during transit.

Logistics and Payment



1. Samples and small orders can be shipped with fast shipment method, by air and by express. Bulk order will ship by sea, by air, by train, by truck etc.
2. We also can send the goods to your agent warehouse.
3. If you need any more shipping method, please feel free to contact with us.



Note:

Due to the wide range of our products, we cannot list all product pictures and corresponding product parameters. If you have other needs, please communicate with me. We can provide supplementary information and technical support. We Are Happy to Serve You.



KRONZ Kronz (guangzhou) Electronics Co., Ltd.



+8618924160375



sales02@kronz.cn



connector-industrial.com

6th Floor, B602 Building, No.10, Rong Jing 2nd Road, Yu Shan Guo Ji, Yong Ning Street, Zeng Cheng District, Guangzhou, P.R.China

