



## M12 Plug Connector 8 Pin A-code Black Screw Connection For Industrial Applications

### Our Product Introduction

For more products please visit us on [connector-industrial.com](http://connector-industrial.com)

#### Basic Information

- Place of Origin: Guangdong, China
- Brand Name: KRONZ
- Certification: CE
- Model Number: H1208M-9/L
- Minimum Order Quantity: 5
- Price: Negotiable
- Packaging Details: Polybag packing
- Delivery Time: 5-8 working days
- Payment Terms: T/T, Western Union, MoneyGram
- Supply Ability: 100000 pieces per month

**KRONZ**

#### Product Specification

- Clamp Matrix Material: ABS, PBT/PA, Black
- Contact Surface Material: Brass, Gold-plated
- Degree Of Protection: IP67
- Connect: Screw Connection
- Contact Resistance:  $\leq 5\text{m}\Omega$
- Insulation Resistance:  $\geq 100\text{M}\Omega$
- Mating Cycles:  $>100$
- Housing Material: TPU, Black
- Highlight: Industrial M12 Plug Connector,  
8 Pin M12 Plug Connector,  
Screw Connection M12 Plug Connector

**KRONZ**

#### More Images

**KRONZ**

## Product Description

### Product Description:

The M12 Male Connector is a versatile and reliable solution for various industrial applications that require secure connections. This M12 3 pin Connector is designed to provide a stable and efficient connection in challenging environments, ensuring optimal performance under varying conditions. With a Pin configuration of 4/5/8, this M12 Plug Connector offers flexibility and compatibility with a range of devices and systems.

One of the key features of the M12 Male Connector is its high Insulation resistance of  $\geq 100\text{M}\Omega$ , which ensures reliable signal transmission and minimizes the risk of electrical interference. This attribute makes the connector suitable for sensitive applications where signal integrity is crucial.

The Cable Outlet Diameter of 4-8mm allows for easy installation and compatibility with different cable sizes, offering versatility in cable management and connection options. The M12 Male Connector is designed to accommodate cables within this diameter range, providing a secure and stable connection for uninterrupted performance.

As a Male connector, the M12 Plug Connector is designed to be compatible with Female connectors, enabling a secure and reliable connection between devices or components. The gender specification ensures proper mating and connectivity, making it ideal for various industrial applications where consistent performance is essential.

Operating within an Ambient temperature range of  $-25^{\circ}\text{C}$  to  $+85^{\circ}\text{C}$ , the M12 Male Connector is suitable for use in a wide range of environments and conditions. Whether in extreme heat or cold, this connector is designed to maintain its performance and reliability, ensuring consistent connectivity in demanding situations.

### Features:

Product Name: M12 Connector

Ambient temperature:  $-25^{\circ}\text{C}$ ~ $+85^{\circ}\text{C}$

Contact resistance:  $\leq 5\text{m}\Omega$

Coding: A

Cable Outlet Diameter: 4-8mm

Rated current: 2A

# KRONZ



KRONZ



KRONZ



Technical Parameters:

M12 Circular Connector	M12 Straight Cable Connector
M12 Male Connector	

Ambient temperature	-25~+85
Pin	8
Gender	Male
Housing material	TPU, Black
Contact nut material	Brass, Alloy
Cable outlet	Straight
Coding	A
Voltage	30V
Standard	IEC 61076-2-101
Seal material	NBR

## Applications:

KRONZ M12 connectors are versatile and reliable, suitable for a wide range of applications across various industries. Here are some product application occasions and scenarios where the M12 connector excels:

**Industrial Automation:** The M12 Female Connector is commonly used in industrial automation systems for connecting sensors, actuators, and other devices. Its screw connection ensures a secure and stable connection, making it ideal for harsh industrial environments.

**Machine Tools:** Connector M12 is well-suited for machine tools such as CNC machines, lathes, and milling machines. Its coding feature (Coding: A) helps prevent incorrect mating, ensuring smooth and efficient operation.

**Robotics:** The M12 Male Connector is a popular choice in robotics applications due to its reliable performance and ease of installation. With a pollution degree of 3, it can withstand moderate levels of contamination in industrial settings.

**Factory Automation:** Whether used in assembly lines, conveyor systems, or control panels, the M12 connector offers a flexible and cost-effective solution for various factory automation applications.

**Electric Vehicles:** The M12 connector is also finding increasing use in electric vehicle charging systems, battery management systems, and power electronics due to its high reliability and robust design.

**Renewable Energy:** From solar inverters to wind turbines, the M12 connector plays a crucial role in ensuring seamless connectivity and data transmission in renewable energy systems.

With its CE certification and high supply ability of 100,000 pieces per month, customers can trust the quality and availability of KRONZ M12 connectors. The minimum order quantity of 5 allows for flexibility in purchasing, while the negotiable price caters to varying budget requirements.

Whether you need a 4-pin, 5-pin, or 8-pin M12 connector with straight cable outlet, KRONZ connectors offer a reliable solution for your connectivity needs. The polybag packing and quick delivery time of 5-8 working days further enhance the convenience of procuring these connectors. Accepted payment terms include T/T, Western Union, and MoneyGram, providing flexibility for customers worldwide.

## ABOUT US

KRONZ is a manufacturing enterprise located in Zengcheng District, Guangzhou City. We focus on providing customers with high-efficiency industrial automation solutions and related industrial products. After many years of innovation and development, KRONZ has complete product processing equipment and a professional team who are proficient in various automation technologies.

In order to improve the quality of products and production efficiency, we continue to introduce advanced production equipment and technology, strengthen investment in research and development. At present, our main products include Industrial Connectors, Inductive Sensors, Capacitive Sensors, Photoelectric Sensors, Ultrasonic Sensors, Industrial power supplies, Industrial fieldbus, RFID recognition systems, Industrial Ethernet Switches

We not only produce the orders of standard products, but also have ability to make customize production based on customer design drawings or samples.

Adhering to the principle of mutual benefit, we provide our customers with competitive prices, and perfect after-sales service. KRONZ's products have been sold in multiple countries, have won the trust and praise of customers. KRONZ expect to collaborate with you.

## OUR FACTORY

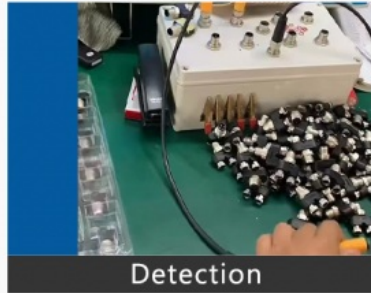


# PRODUCTION PROCESS

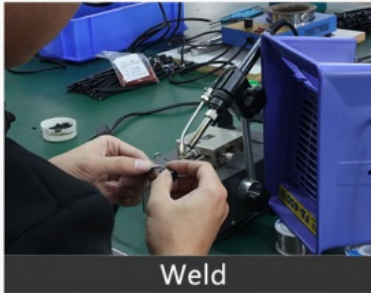
Kronz (Guangzhou) Electronics Co., Ltd.



Raw material



Detection



Weld



Injection molding



Winding



Package

## Support and Services:

The M12 Connector product comes with comprehensive Product Technical Support and Services to assist customers with any issues or queries they may have. Our dedicated technical support team is available to provide guidance on installation, troubleshooting, and any other technical questions related to the M12 Connector product. Additionally, we offer repair and maintenance services to ensure the continuous performance and longevity of the product. Our goal is to ensure that customers receive the necessary support and services to maximize the efficiency and reliability of their M12 Connector product.



# Certifications



## Packing and Shipping:

Product Packaging for M12 Connector: -----

The M12 Connector is carefully packaged to ensure safe delivery. Each connector is placed in a protective plastic bag and then inserted into a sturdy cardboard box with ample cushioning to prevent any damage during transit.

Shipping Information:

Once your order is confirmed, the M12 Connectors will be securely packed and shipped within 1-2 business days. We partner with reliable shipping carriers to ensure timely delivery to your doorstep. You will receive a tracking number to monitor the status of your shipment.

# Logistics and Payment



1. Samples and small orders can be shipped with fast shipment method, by air and by express. Bulk order will ship by sea, by air, by train, by truck etc.

2. We also can send the goods to your agent warehouse.

3. If you need any more shipping method, please feel free to contact with us.



## Note:

Due to the wide range of our products, we cannot list all product pictures and corresponding product parameters. If you have other needs, please communicate with me. We can provide supplementary information and technical support. We Are Happy to Serve You.



**KRONZ** Kronz (guangzhou) Electronics Co., Ltd.



+8618924160375



sales02@kronz.cn



connector-industrial.com

6th Floor, B602 Building, No.10, Rong Jing 2nd Road, Yu Shan Guo Ji, Yong Ning Street, Zeng Cheng District, Guangzhou, P.R.China