



M12 Cable Connector Male Aviation Socket with 1m Wire Open 12mm Panel Mount Plug

Our Product Introduction

for more products please visit us on connector-industrial.com

Basic Information

- Place of Origin: Guangdong, China
- Brand Name: KRONZ
- Certification: CE
- Model Number: F1204M-1F/M16C
- Minimum Order Quantity: 50 pieces
- Price: Negotiable
- Packaging Details: Polybag packing
- Delivery Time: 5-8 working days
- Payment Terms: T/T, Western Union, MoneyGram
- Supply Ability: 100000 pieces per month

KRONZ



Product Specification

- Connection: Screw Clamping
- Termination: Crimp Contact
- Operating Temperature: -40 ~+80
- Polluting Voltage: 250V AC/DC
- Operating Current: 4A
- Contact Resistance: $\leq 5 \text{ M}\Omega$

KRONZ



More Images

KRONZ



KRONZ



KRONZ



Product Description

M12 Panel Mount Connector 4-Pin Male Front Mounting M16 x 1.5

This robust 4-pin, male, A-coded M12 connector is engineered for secure panel integration. Its rear-panel mounting with front-locking nut ensures easy installation and a reliable, vibration-resistant hold. The M16 rear thread provides compatibility with standard mounting holes and offers excellent strain relief for connected cables.

Ideal for industrial automation, sensors, and control systems, this connector guarantees a secure power and signal transmission link. Its IP67 rating ensures protection against dust and moisture in challenging environments. The A-coded design prevents mismatching with other M12 families, ensuring system integrity.

Type: Male, A-coded

Contacts: 4-pin

Mounting: Rear panel, front locking

Rear Thread: M16

Performance: Reliable and durable



6 REASONS TO CHOOSE US

Providing you with the best protection



STABLE PERFORMANCE



HIGH COST PERFORMANCE



TECHNICAL SUPPORT



QUALITY ASSURANCE



FAST DELIVERY



INTIMATE SERVICE

KRONZ

PRODUCT DETAILS

STRENGTH FACTORY QUALITY ASSURANCE



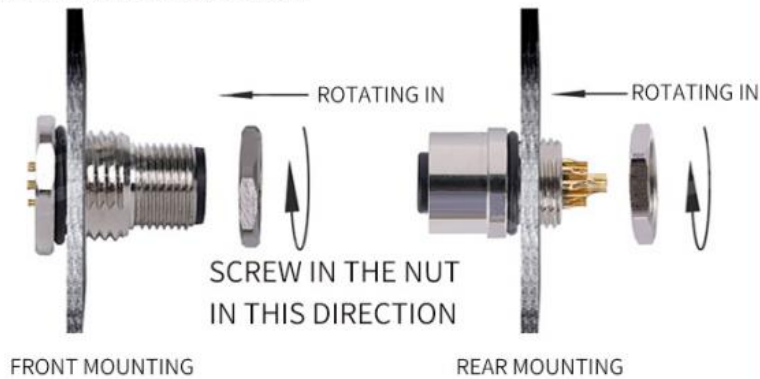
COPPER CORE GOLD-PLATED COLD RESISTANT AND HEAT-RESISTANT EXQUISITE CRAFTSMANSHIP

Analysis

PRODUCT ANALYSIS

MORE COMPREHENSIVE UNDERSTANDING OF THE PRODUCT

M12 PANEL MOUNT CONNECTORS INSTALLATION DIAGRAM



CONNECTION TYPE



ELECTRONIC WIRE TAIL SOLUTION

Diverse choices, supporting customization



PRODUCT NAME

SERIES PRODUCT DISPLAY M12 Panel Mount Connectors

Solder cup
Rear mounting
Male and female
options available



PCB version
Front mounting
Male and female
options available

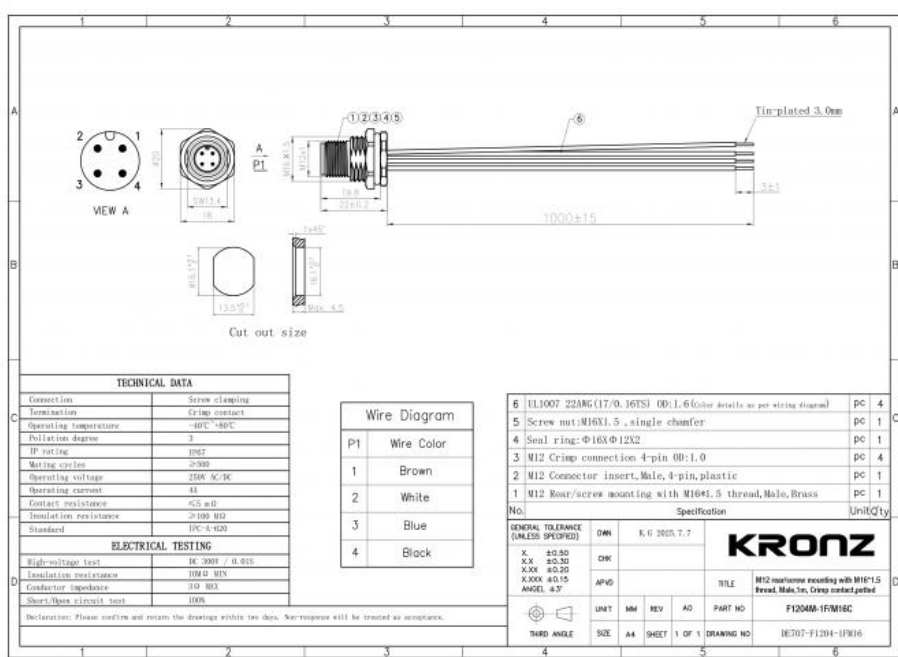


PRE-assembled
Front mounting
Male and female
options available



*There are many product categories, only some products are displayed.
If you need other products, please contact customer service and send the product catalog

INDUSTRIAL CONNECTOR PARAMETER TABLE



COMPANY CERTIFICATE



KRONZ Kronz (guangzhou) Electronics Co., Ltd.



+8618924160375



sales02@kronz.cn



connector-industrial.com

6th Floor, B602 Building, No.10, Rong Jing 2nd Road, Yu Shan Guo Ji, Yong Ning Street, Zeng Cheng District, Guangzhou, P.R.China