



## M12 8 Pin Connector Cable IP67 Waterproof Panel Front Socket Plug with 1M Wire

Our Product Introduction

for more products please visit us on [connector-industrial.com](http://connector-industrial.com)

### Basic Information

- Place of Origin: Guangdong, China
- Brand Name: KRONZ
- Certification: CE
- Model Number: F1208M-1F/M16C
- Minimum Order Quantity: 50 pieces
- Price: Negotiable
- Packaging Details: Polybag packing
- Delivery Time: 5-8 working days
- Payment Terms: T/T, Western Union, MoneyGram
- Supply Ability: 100000 pieces per month

KRONZ



### Product Specification

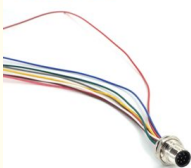
- Type: Panel Mount M12
- Insulation Resistance:  $\geq 100 \text{ M}\Omega$
- Standard: IPC-A-620
- Polluting Voltage: 30V AC/DC
- Operating Current: 2A
- High-voltage Test: DC 300V / 0.01S

KRONZ

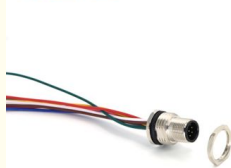


### More Images

KRONZ



KRONZ



KRONZ



## Product Description

### M12 rear/screw mounting with M16\*1.5 thread, Male,1m, Crimp contact,potted

This robust male M12 connector features a rear/screw mounting design with an M16x1.5 thread for secure and stable panel installation. The 1-meter cable is terminated with crimp contacts for reliable electrical performance and features a potted (overmolded) cable gland for superior strain relief and durability.

Ideal for industrial automation, robotics, and sensor applications, this connector ensures a secure and vibration-resistant connection. The potting seal provides excellent protection against moisture, dust, and oils, making it suitable for harsh environments.

Type: Male

Mounting: Rear/Screw with M16x1.5 thread

Cable: 1 meter

Termination: Crimp contacts

Sealing: FPM/FKM



## 6 REASONS TO CHOOSE US

Providing you with the best protection



STABLE PERFORMANCE



HIGH COST PERFORMANCE



TECHNICAL SUPPORT



QUALITY ASSURANCE



FAST DELIVERY



INTIMATE SERVICE

**KRONZ**

## PRODUCT DETAILS

STRENGTH FACTORY QUALITY ASSURANCE



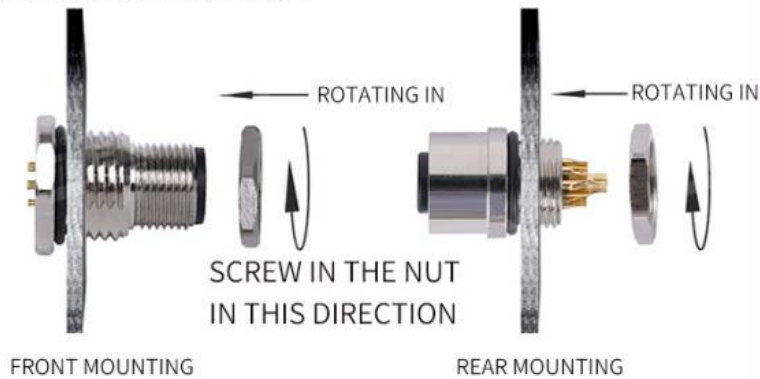
COPPER CORE GOLD-PLATED   COLD RESISTANT AND HEAT-RESISTANT   EXQUISITE CRAFTSMANSHIP

## Analysis

# PRODUCT ANALYSIS

MORE COMPREHENSIVE UNDERSTANDING OF THE PRODUCT

### M12 PANEL MOUNT CONNECTORS INSTALLATION DIAGRAM



### CONNECTION TYPE



### ELECTRONIC WIRE TAIL SOLUTION

Diverse choices, supporting customization





## PRODUCT NAME

## SERIES PRODUCT DISPLAY M12 Panel Mount Connectors

Solder cup  
Rear mounting  
Male and female  
options available



PCB version  
Front mounting  
Male and female  
options available

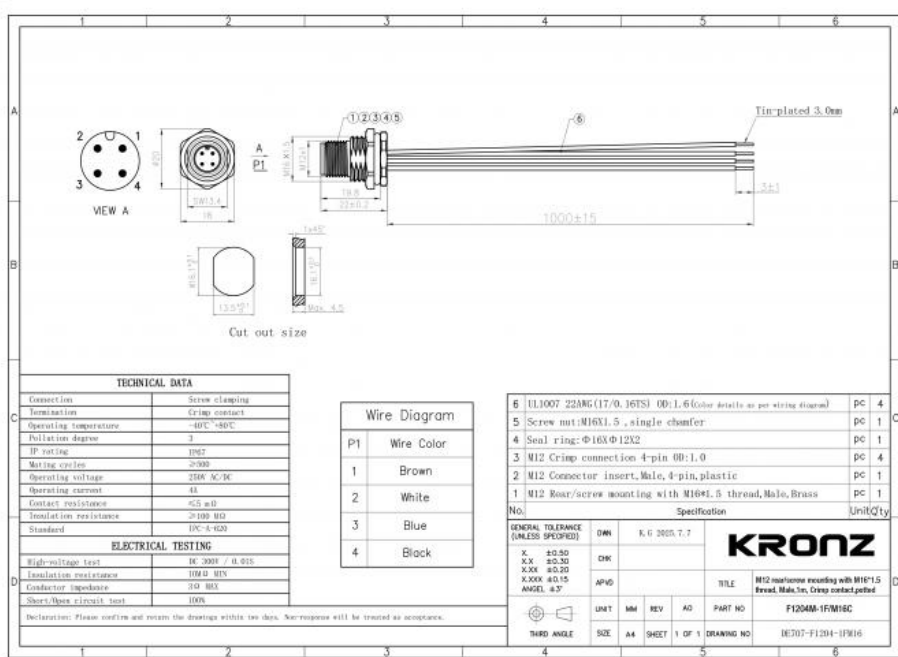


PRE-assembled  
Front mounting  
Male and female  
options available



\*There are many product categories, only some products are displayed.  
If you need other products, please contact customer service and send the product catalog

## INDUSTRIAL CONNECTOR PARAMETER TABLE



# COMPANY CERTIFICATE



**KRONZ** Kronz (guangzhou) Electronics Co., Ltd.

+8618924160375

sales02@kronz.cn

connector-industrial.com

6th Floor, B602 Building, No.10, Rong Jing 2nd Road, Yu Shan Guo Ji, Yong Ning Street, Zeng Cheng District, Guangzhou, P.R.China