



## Waterproof M12 12 Pin Socket Wire Board Front Connector Cable with Zinc Alloy Shell

Our Product Introduction

for more products please visit us on [connector-industrial.com](http://connector-industrial.com)

### Basic Information

- Place of Origin: Guangdong, China
- Brand Name: KRONZ
- Certification: CE
- Model Number: F1212M-1F/M16C
- Minimum Order Quantity: 50 pieces
- Price: Negotiable
- Packaging Details: Polybag packing
- Delivery Time: 5-8 working days
- Payment Terms: T/T, Western Union, MoneyGram
- Supply Ability: 100000 pieces per month

KRONZ



### Product Specification

- Type: M12 Connector 12 Pin
- Conductor Impedance: 3Ω MAX
- Screw Nut: M16X1.5 ,single Chamfer
- Operating Current: 1.5A
- Seal Ring: Φ16XΦ12X2
- Code: A Coding

KRONZ



### More Images

KRONZ



KRONZ



KRONZ



## Product Description

### M12 12 Pin Socket Wire Board Front Connector Cable with Zinc Alloy Shell Built-in Glue Filling Seat

This waterproof M12 panel mount connector is engineered for reliability. Designed for front-panel board installation, it features a durable zinc alloy shell that provides superior resistance to impact and corrosion. The integrated glue filling seat allows for a complete potting process, creating an exceptional IP67 seal against moisture, dust, and oils. The 12-pin socket (female) design ensures a secure connection for power and signal transmission in complex industrial systems.

Ideal for factory automation, heavy machinery, and harsh outdoor environments where a robust and sealed connection is critical.

Type: 12-pin, Socket (Female)

Mounting: Front Panel

Shell: Zinc Alloy

Sealing: Built-in Glue Filling Seat

Construction: Connector with Wire



## 6 REASONS TO CHOOSE US

Providing you with the best protection



STABLE PERFORMANCE



HIGH COST PERFORMANCE



TECHNICAL SUPPORT



QUALITY ASSURANCE



FAST DELIVERY



INTIMATE SERVICE

**KRONZ**

## PRODUCT DETAILS

STRENGTH FACTORY QUALITY ASSURANCE



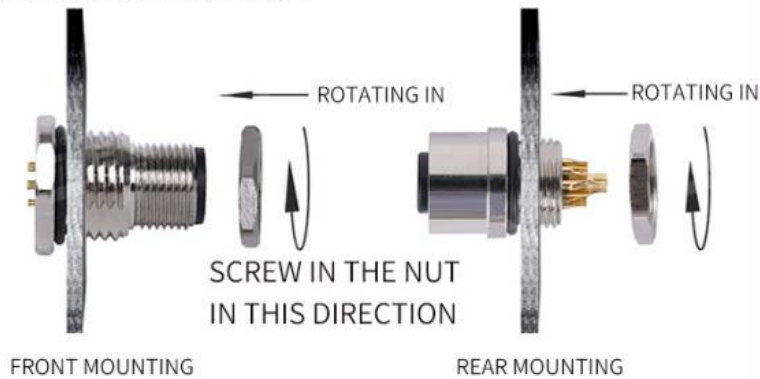
COPPER CORE GOLD-PLATED   COLD RESISTANT AND HEAT-RESISTANT   EXQUISITE CRAFTSMANSHIP

## Analysis

# PRODUCT ANALYSIS

MORE COMPREHENSIVE UNDERSTANDING OF THE PRODUCT

### M12 PANEL MOUNT CONNECTORS INSTALLATION DIAGRAM



### CONNECTION TYPE



### ELECTRONIC WIRE TAIL SOLUTION

Diverse choices, supporting customization





## PRODUCT NAME

## SERIES PRODUCT DISPLAY M12 Panel Mount Connectors

Solder cup  
Rear mounting  
Male and female  
options available



PCB version  
Front mounting  
Male and female  
options available

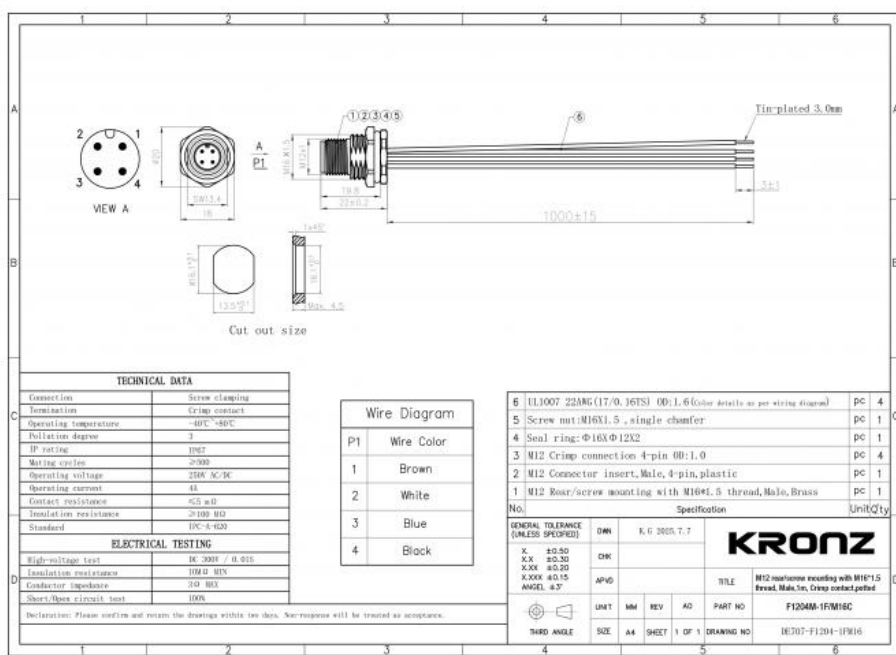


PRE-assembled  
Front mounting  
Male and female  
options available



\*There are many product categories, only some products are displayed.  
If you need other products, please contact customer service and send the product catalog

## INDUSTRIAL CONNECTOR PARAMETER TABLE



# COMPANY CERTIFICATE



**KRONZ** Kronz (guangzhou) Electronics Co., Ltd.



+8618924160375



sales02@kronz.cn



connector-industrial.com

6th Floor, B602 Building, No.10, Rong Jing 2nd Road, Yu Shan Guo Ji, Yong Ning Street, Zeng Cheng District, Guangzhou, P.R.China